



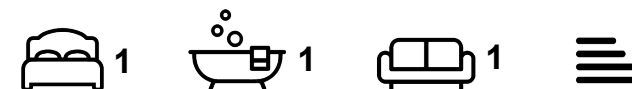
Flat

**FLAT 4, 21
MIDLAND ROAD,
LEEDS, HYDE
PARK, LEEDS, LS6
1BQ**

Per Month

£750 Per

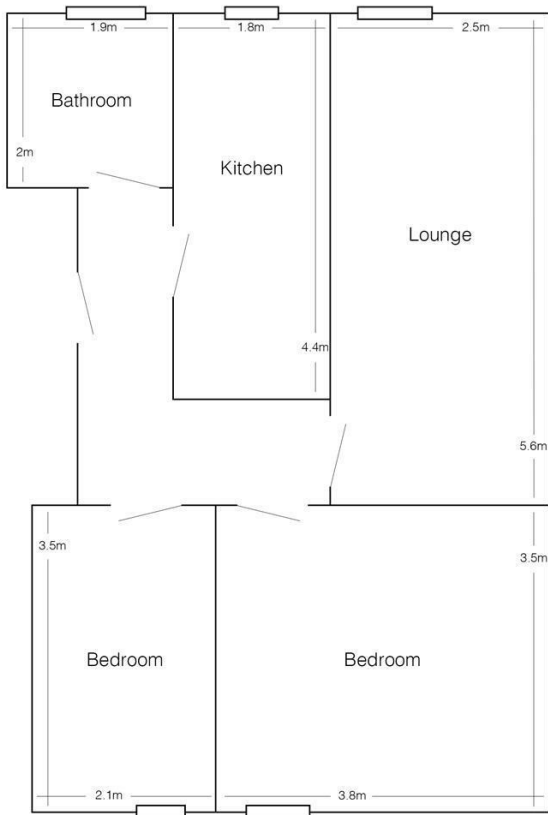
FEATURES



SJM ©
PROPERTIES

1 Bedroom Flat located in Leeds

- Exceptional value modern apartment.
- Large lounge with double glazed window overlooking the rear garden.
- Separate and fully modernised fitted kitchen with oven, hob, washing machine and fridge freezer.
- Good sized double bedroom with built in wardrobe and double bed.
- Second guest room or home office.
- Modern bathroom with large walk in shower.
- Gas central heated and double glazed



Flat 4, 21 Midland Road
(drawing not to scale)

Call us on

01132782201

phil@sjm-properties.com
sjm-properties.com

Council Tax Band

A

Energy Efficiency Rating		
	Current	Potential
Very energy efficient - lower running costs		
(92 plus) A		
(81-91) B		
(69-80) C		
(55-68) D		
(39-54) E		
(21-38) F		
(1-20) G		
Not energy efficient - higher running costs		
England & Wales	EU Directive 2002/91/EC	

Agents Note: Whilst every care has been taken to prepare these particulars, they are for guidance purposes only. All measurements are approximate and are for general guidance purposes only and whilst every care has been taken to ensure their accuracy, they should not be relied upon and potential buyers are advised to recheck the measurements.

SJM [©]
PROPERTIES