



Flat

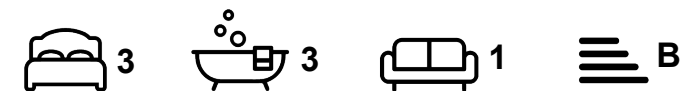
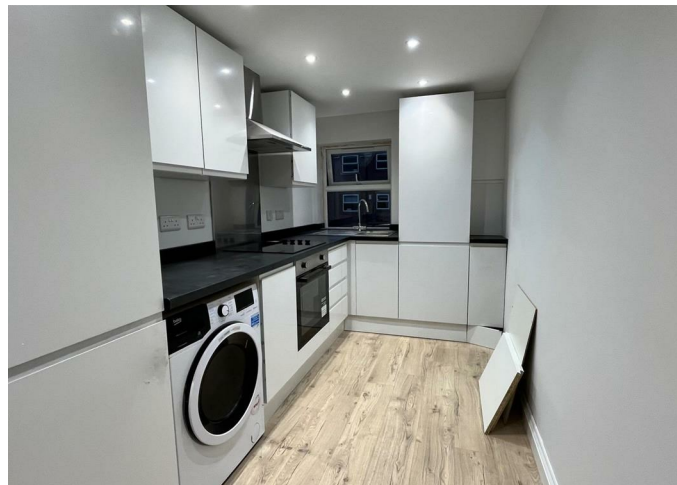
FLAT 4, HEADINGLEY RISE WELTON ROAD, HYDE PARK, LEEDS, LS6 1EE

Per Week

£360 Per

FEATURES

- 5 Bedrooms
- Hyde Park
- Gas C/H
- Flat
- Furnished Property



SJM ©
PROPERTIES

3 Bedroom Flat located in Leeds

Brand new 3 bedroom 3 bathroom apartment ready for the 1st of September 2026.

Each large double bedroom has a study area, dressing area and sleeping area and is furnished with a double bed, Large Ikea double wardrobe, Chest of drawers, desk and chair.

The open plan lounge kitchen has a lovely corner sofa and a media wall with floating unit and a wall mounted smart TV.

The kitchen has ample storage and incorporates integrated fridge freezer, oven and hob as well as a washer dryer.

The apartment also features 3 shower rooms 1 En-suite.

This place is brand new and even has new windows, switches, sockets, light fittings and wood flooring throughout. Rent is £150 per person per week including gas central heating, water rates, electricity and Virgin Wifi.

It sits in a gated complex in central Hyde Park and has its own parking.

Call us on

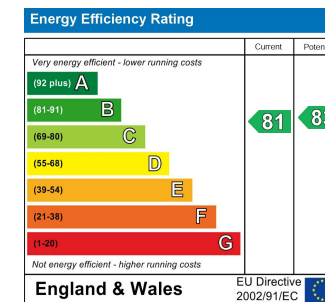
01132782201

phil@sjm-properties.com

sjm-properties.com

Council Tax Band

B



Agents Note: Whilst every care has been taken to prepare these particulars, they are for guidance purposes only. All measurements are approximate and are for general guidance purposes only and whilst every care has been taken to ensure their accuracy, they should not be relied upon and potential buyers are advised to recheck the measurements.

SJM [©]
PROPERTIES