



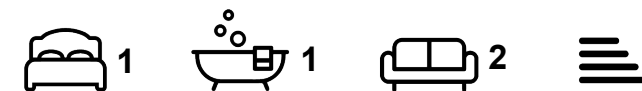
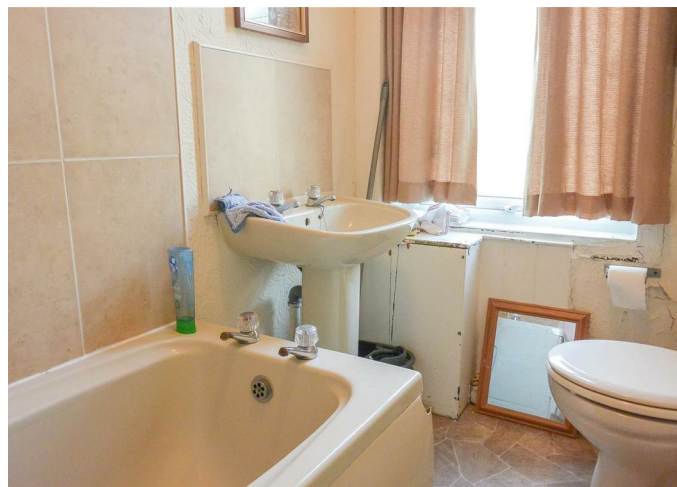
Apartment

# FLAT 3, 4 REGENT PARK TERRACE, HYDE PARK, LEEDS, LS6 2AX

Per Month

## £550 Per

FEATURES



**SJM** ©  
**PROPERTIES**

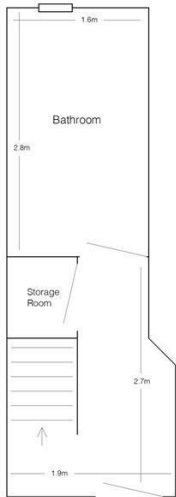
# 1 Bedroom Apartment located in Leeds

Fully modernized one-bedroom flat situated in a desirable area of Hyde Park, conveniently located near the park, shops, pubs, and various amenities. Just a short stroll from the University of Leeds.

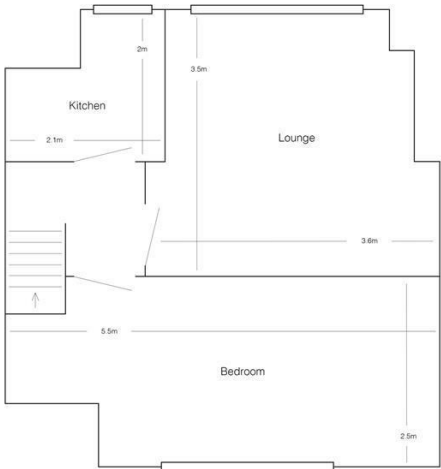
The property boasts a spacious lounge with ample room for storage, featuring a wardrobe. A separate modern kitchen with graphite worktops is equipped with essential appliances including a washing machine, cooker, hob, and fridge.

A tiled bathroom offers both a bath and shower overhead for added convenience. The large bedroom includes a double bed, desk, and desk chair, providing a comfortable living space.

Throughout the property, double glazing ensures energy efficiency and a quiet environment.



Ground Floor



First Floor

Call us on

**01132782201**

**phil@sjm-properties.com**

**sjm-properties.com**

**Council Tax Band**

**A**

Energy Efficiency Rating		
	Current	Potential
Very energy efficient - lower running costs		
(92 plus) <b>A</b>		
(81-91) <b>B</b>		
(69-80) <b>C</b>		
(55-68) <b>D</b>		
(39-54) <b>E</b>		
(21-38) <b>F</b>		
(1-20) <b>G</b>		
Not energy efficient - higher running costs		
England & Wales		EU Directive 2002/91/EC

Agents Note: Whilst every care has been taken to prepare these particulars, they are for guidance purposes only. All measurements are approximate and are for general guidance purposes only and whilst every care has been taken to ensure their accuracy, they should not be relied upon and potential buyers are advised to recheck the measurements.

**SJM** <sup>©</sup>  
**PROPERTIES**