



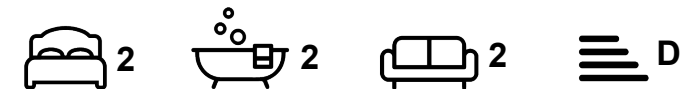
Apartment

5, NEW MOON APARTMENTS SHIRE OAK ROAD, HEADINGLEY, LEEDS, LS6 2DB

Per Week

£260 Per

FEATURES



SJM ©
PROPERTIES

2 Bedroom Apartment located in Leeds

Stunning Two-Bedroom Apartment in Central Headingley
Nestled within its own grounds and secured by electric gates, this exquisite apartment offers a blend of modern comfort and convenience in the heart of Headingley.

Key Features:

Spacious Lounge: A large living area with elegant wood flooring, perfect for relaxation and entertaining.

Separate Kitchen: A fully equipped kitchen, designed for both functionality and style.

Two Double Bedrooms: Each bedroom is fully furnished, featuring a wardrobe, desk, chair, and chest of drawers, providing ample storage and workspace.

Two Tiled Bathrooms: Modern and stylish, ensuring comfort and convenience.

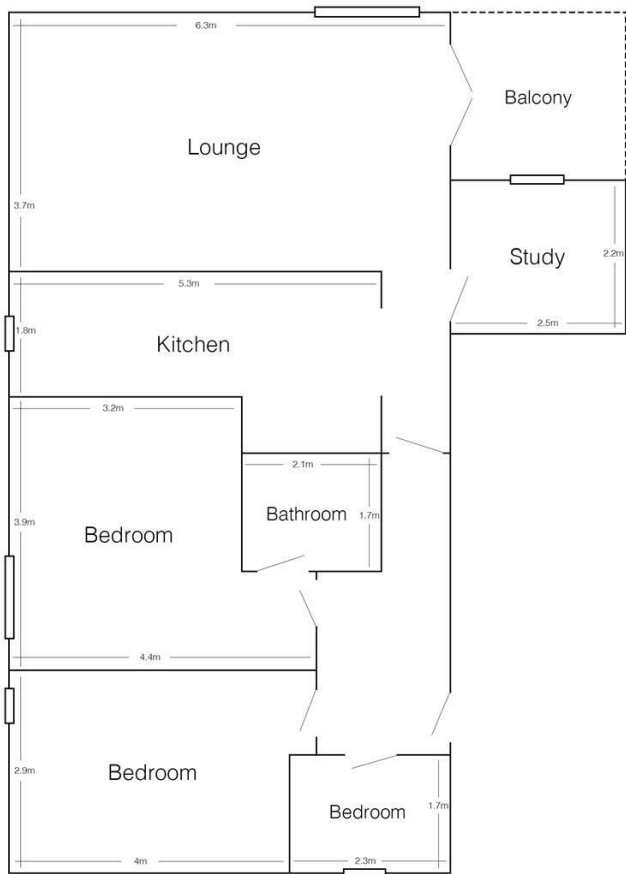
Modern Electric Heating: Efficient and easy to control, ensuring a warm and cozy environment year-round.

This property is ideal for those seeking a comfortable and stylish living space in a prime location.

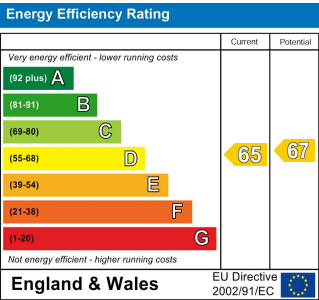
Call us on
01132782201

phil@sjm-properties.com
sjm-properties.com

Council Tax Band
C



5 New Moon
(drawing not to scale)



Agents Note: Whilst every care has been taken to prepare these particulars, they are for guidance purposes only. All measurements are approximate and are for general guidance purposes only and whilst every care has been taken to ensure their accuracy, they should not be relied upon and potential buyers are advised to recheck the measurements.

SJM [©]
PROPERTIES