



Apartment

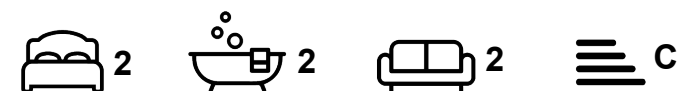
FLAT 7, 8 BROOMFIELD CRESCENT, HEADINGLEY, LEEDS, LS6 3DD

Per Week

£264 Per

FEATURES

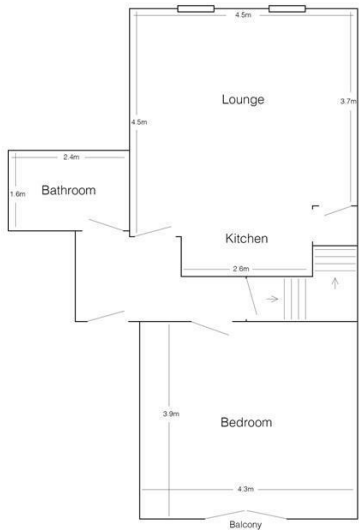
- 2 Bedrooms
- Flat
- Headingley
- Furnished Property



SJM ©
PROPERTIES

2 Bedroom Apartment located in Leeds

Luxury Modern 2-Bedroom Apartment in the Heart of Headingley
Located in vibrant Headingley, just moments from an array of popular bars, restaurants, cafés, and local amenities, this stylish and spacious two-bedroom apartment offers contemporary living in one of Leeds' most sought-after areas.
The property boasts a large, beautifully presented lounge with wooden flooring and comfortable sofas — perfect for relaxing or entertaining. The modern, fully fitted kitchen features granite-effect worktops and comes equipped with a washing machine for added convenience.
Both double bedrooms are tastefully furnished with fitted wardrobes, chest of drawers, desks, and chairs — ideal for professionals or students alike. The fully tiled bathroom includes a shower over the bath, offering both functionality and style.
Additional benefits include:
Gas central heating and double glazing throughout
Intruder alarm for added security
Lawned gardens to the front
Free off-street parking
An excellent choice for those seeking luxury, space, and convenience in a lively and well-connected location.



Ground Floor

Flat 7, 8 Broomfield Crescent
(drawing not to scale)



First Floor

Call us on

01132782201

phil@sjm-properties.com
sjm-properties.com

Council Tax Band
B

Energy Efficiency Rating		
	Current	Potential
Very energy efficient - lower running costs		
(92 plus) A		
(81-91) B		
(69-80) C	76	80
(55-68) D		
(39-54) E		
(21-38) F		
(1-20) G		
Not energy efficient - higher running costs		
England & Wales		EU Directive 2002/91/EC

Agents Note: Whilst every care has been taken to prepare these particulars, they are for guidance purposes only. All measurements are approximate and are for general guidance purposes only and whilst every care has been taken to ensure their accuracy, they should not be relied upon and potential buyers are advised to recheck the measurements.

SJM [©]
PROPERTIES