



Apartment

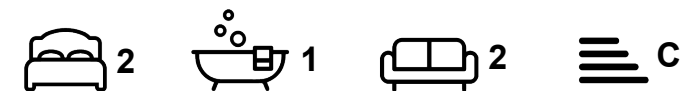
**FLAT 5, 8  
BROOMFIELD  
CRESCENT,  
HEADINGLEY,  
LEEDS, LS6 3DD**

Per Week

**£254 Per**

FEATURES

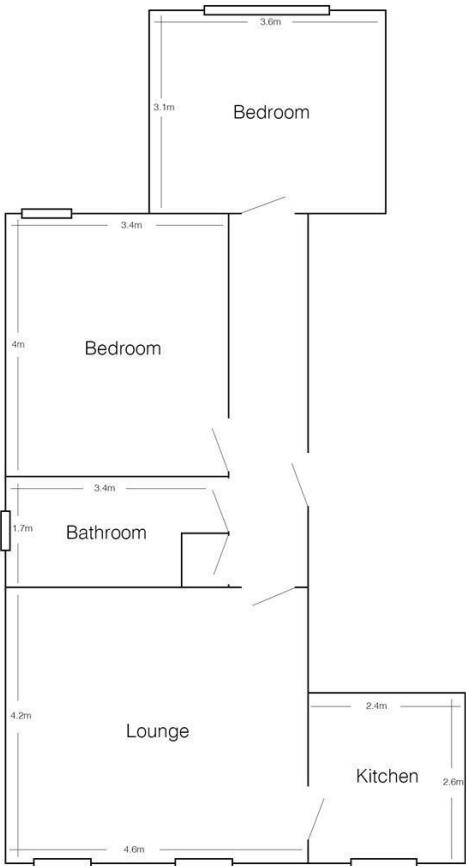
- 2 Bedrooms
- Flat
- Headingley
- Furnished Property



**SJM** ©  
**PROPERTIES**

# 2 Bedroom Apartment located in Leeds

Luxury modern apartments in Headingley, where there are fabulous bars, restaurants, coffee bars and other amenities. This property comprises of a very spacious lounge with wooden flooring and furnished with sofas. Modern fully fitted kitchen with granite effect work tops and washing machine. Two double bedrooms with a fitted wardrobe, chest of drawers, desk and chair. Fully tiled bathroom with a shower over the bath. It has gas central heating and double glazing throughout and an alarm. There are lawns at the front and it benefits from free off street parking.



Flat 5, 8 Broomfield Crescent  
(drawing not to scale)

Call us on

01132782201

phil@sjm-properties.com  
sjm-properties.com

Council Tax Band

A

Energy Efficiency Rating		
	Current	Potential
Very energy efficient - lower running costs		
(92 plus) A		
(81-91) B		
(69-80) C	80	81
(55-68) D		
(39-54) E		
(21-38) F		
(1-20) G		
Not energy efficient - higher running costs		
England & Wales	EU Directive 2002/91/EC	

Agents Note: Whilst every care has been taken to prepare these particulars, they are for guidance purposes only. All measurements are approximate and are for general guidance purposes only and whilst every care has been taken to ensure their accuracy, they should not be relied upon and potential buyers are advised to recheck the measurements.

**SJM** <sup>©</sup>  
**PROPERTIES**