



House

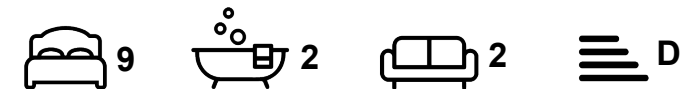
14 ASH GROVE, HYDE PARK, LEEDS, LS6 1AY

Per Week

£1,017

FEATURES

- 9 Bedrooms
- Hyde Park
- Gas C/H
- House
- Furnished Property



SJM ©
PROPERTIES

9 Bedroom House located in Leeds

Call us on

01132782201

phil@sjm-properties.com

sjm-properties.com

Council Tax Band

D

Large furnished 9 bedroom house with 2 bathrooms and all large double bedrooms.

Open plan lounge kitchen, All bedrooms have wardrobe, chest of drawers, desk and chair. the property is gas central heated and double glazed.

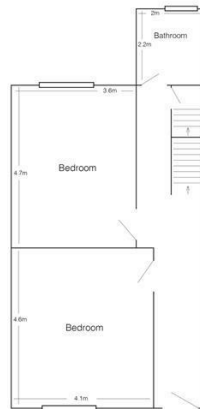
2 bathrooms.

Great house in the heart of Hyde Park a short walk from Leeds Uni.

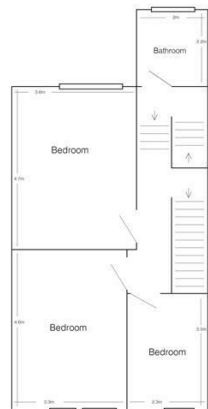
YOU CAN RENT THIS HOUSE WITH GAS, WATER, ELECTRIC AND WIFI INCLUDED FOR ONLY £132 PER PERSON WEEK



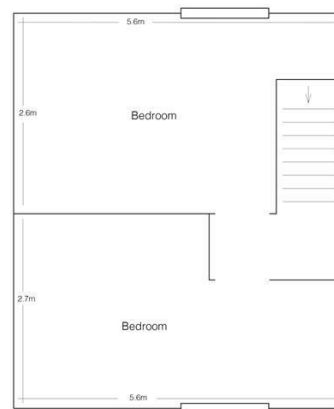
Basement



Ground Floor



First Floor



Second Floor

| Energy Efficiency Rating | | |
|---|-------------------------|-----------|
| | Current | Potential |
| Very energy efficient - lower running costs | | |
| (92 plus) A | | |
| (81-91) B | | |
| (69-80) C | | |
| (55-68) D | | |
| (39-54) E | 56 | 56 |
| (21-38) F | | |
| (1-20) G | | |
| Not energy efficient - higher running costs | | |
| England & Wales | EU Directive 2002/91/EC | |

Agents Note: Whilst every care has been taken to prepare these particulars, they are for guidance purposes only. All measurements are approximate and are for general guidance purposes only and whilst every care has been taken to ensure their accuracy, they should not be relied upon and potential buyers are advised to recheck the measurements.

SJM [©]
PROPERTIES