



House





**12 ST ANNS LANE,
HEADINGLEY,
LEEDS, LS4 2SE**

Per Week

£540 Per

FEATURES



 6  3  2  E

SJM [©]
PROPERTIES

6 Bedroom House located in Leeds

Call us on

01132782201

phil@sjm-properties.com

sjm-properties.com

Council Tax Band

D

RENT INCLUDES GAS CENTRAL HEATING, WATER RATES, ELECTRICITY AND VIRGIN BROADBAND FOR ONLY £112 PER PERSON PER WEEK

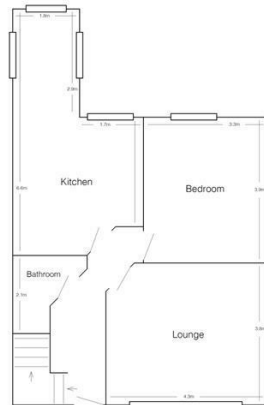
Lovely 6 bedroom house with driveway and gardens front and rear.

Double glazed and gas central heated throughout with 3 bathrooms.

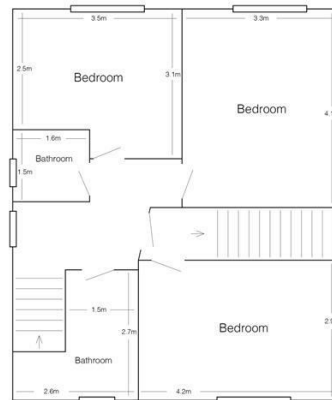
Large lounge carpeted and furnished with leather sofas.

Large modern fitted kitchen with 2 fridge freezers, oven, hob, dishwasher and washer dryer.

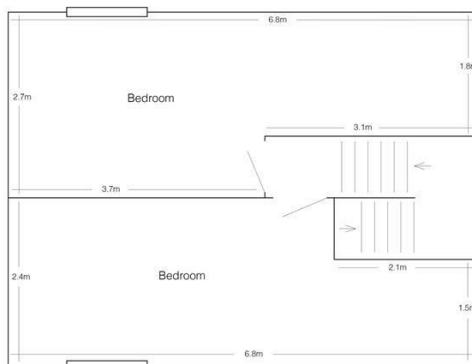
All double bedrooms with fitted wardrobes, desks and chest of drawers. A chair is also provided



Ground Floor



First Floor



Second Floor

Energy Efficiency Rating		
	Current	Potential
Very energy efficient - lower running costs		
(92 plus) A		
(81-91) B		
(69-80) C		
(55-68) D		
(39-54) E		
(21-38) F		
(1-20) G		
Not energy efficient - higher running costs		
England & Wales	EU Directive 2002/91/EC	

Agents Note: Whilst every care has been taken to prepare these particulars, they are for guidance purposes only. All measurements are approximate and are for general guidance purposes only and whilst every care has been taken to ensure their accuracy, they should not be relied upon and potential buyers are advised to recheck the measurements.

SJM [©]
PROPERTIES