

Flat

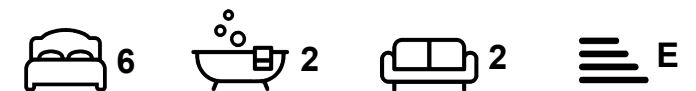
10B CUMBERLAND ROAD, HEADINGLEY, LEEDS, LS6 2EF

Per Week

£696 Per

FEATURES

- 6 Bedrooms
- Hyde Park
- Flat
- Furnished Property



SJM ©
PROPERTIES

6 Bedroom Flat located in Leeds

Call us on

01132782201

phil@sjm-properties.com

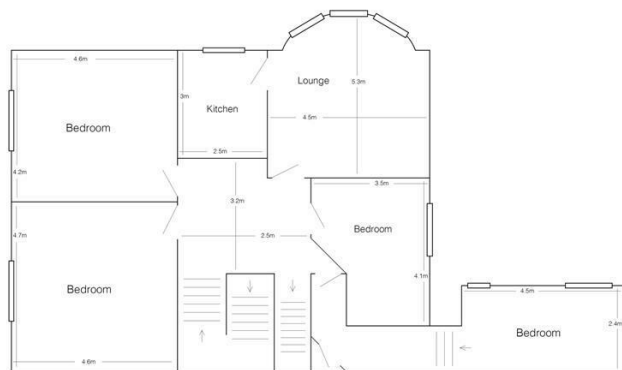
sjm-properties.com

Rent this property inclusive of gas central heating, water rates, electricity & wifi for only £138 per person per week

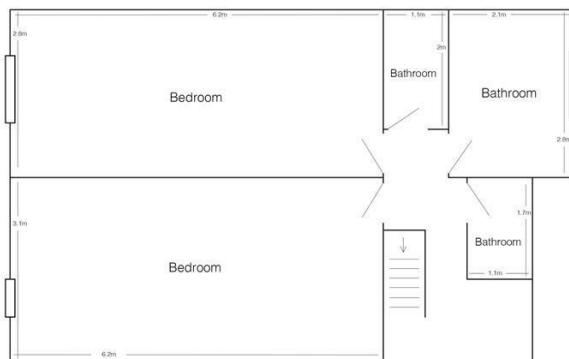
A fully modernised terrace house converted into two apartments in Hyde Park off Headingley Lane, close to the University and a short walk to Headingley. This is a very spacious apartment set over two floors. There is a spacious lounge with a bay window overlooking the garden and furnished with sofas and a flat screen TV. A fully fitted modern kitchen. All the double bedrooms are furnished with a double bed, a wardrobe, chest of drawers, desk and chair. Two bathrooms; one bathroom has a bath and the other is a shower room. It has gas central heating and double glazing throughout and an alarm.

Council Tax Band

D



First Floor



Second Floor

Energy Efficiency Rating		
	Current	Potential
Very energy efficient - lower running costs		
(92 plus) A		
(81-91) B		
(69-80) C		
(55-68) D		
(39-54) E	47	56
(21-38) F		
(1-20) G		
Not energy efficient - higher running costs		
England & Wales	EU Directive 2002/91/EC	

Agents Note: Whilst every care has been taken to prepare these particulars, they are for guidance purposes only. All measurements are approximate and are for general guidance purposes only and whilst every care has been taken to ensure their accuracy, they should not be relied upon and potential buyers are advised to recheck the measurements.

SJM [©]
PROPERTIES