



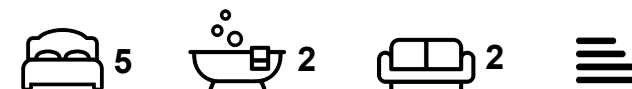
House

22 STANMORE PLACE, BURLEY, LEEDS, LS4 2RR

Per Week

£430 Per

FEATURES



SJM ©
PROPERTIES

5 Bedroom House located in Leeds

Call us on

01132782201

phil@sjm-properties.com
sjm-properties.com

RENT THIS HOUSE WITH GAS CENTRAL HEATING, WATER RATES, ELECTRICITY, WIFI INCLUDED FOR ONLY £110 PER PERSON PER WEEK

A fully refurbished modern terrace house near Headingley Stadium.

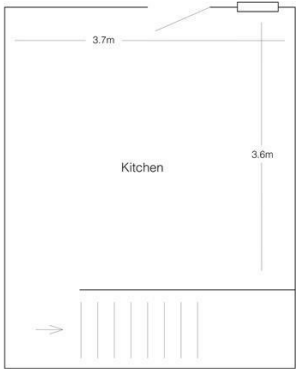
A five minute walk into Headingley, where there are fabulous bars, restaurants, coffee bars and other amenities using the walkway by the stadium and a five minute walk into Burley.

There is a spacious carpeted lounge with an original fireplace and furnished with sofas.

A fully fitted modern kitchen with a washing machine.

5 double bedrooms furnished with a double bed, a wardrobe, desk and chair.

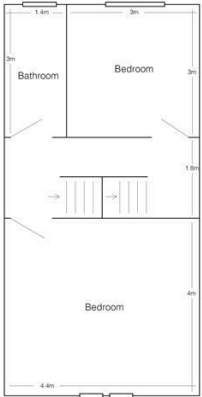
Council Tax Band
B



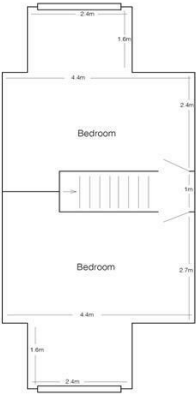
Basement



Ground Floor



First Floor



Second Floor

Energy Efficiency Rating		
	Current	Potential
Very energy efficient - lower running costs		
(92 plus) A		
(81-91) B		
(69-80) C		
(55-68) D		
(39-54) E		
(21-38) F		
(1-20) G		
Not energy efficient - higher running costs		
England & Wales		EU Directive 2002/91/EC

Agents Note: Whilst every care has been taken to prepare these particulars, they are for guidance purposes only. All measurements are approximate and are for general guidance purposes only and whilst every care has been taken to ensure their accuracy, they should not be relied upon and potential buyers are advised to recheck the measurements.

SJM [©]
PROPERTIES