



House

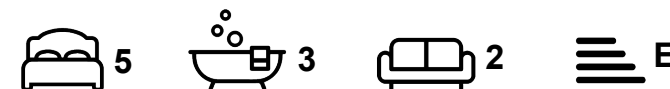
28 BENNETT ROAD, HEADINGLEY, LEEDS, LS6 3HN

Per Week

£565 Per

FEATURES

- 5 Bedrooms
- Headingley
- Gas C/H
- House
- Furnished Property

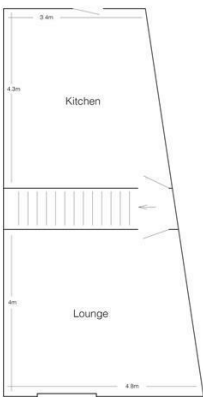


SJM ©
PROPERTIES

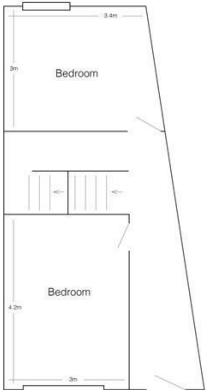
5 Bedroom House located in Leeds

THIS HOUSE HAS UNDERGONE A FULL REDECORATION WITH ALL NEW CARPETS THROUGHOUT AND ALL NEW FURNITURE INCLUDING NEW BEDS, WARDROBES, SOFAS ETC
 UTILITY BILLS CAN BE INCLUDED FOR ONLY £137 PER PERSON PER WEEK

Excellent modernised terrace house in central Headingley, where there are fabulous bars, restaurants, coffee shop and other amenities. A very spacious lounge furnished with sofas and a very spacious fully fitted modern kitchen with a washing machine, dishwasher and dining table and chairs. Five double bedrooms furnished with a double bed, a wardrobe, chest of drawers, desk, chair and wall mounted TV. Three bathrooms; one has a corner bath and separate shower, one is a shower room and the third has a bath with a shower. It has double glazing and gas central heating throughout and an alarm.



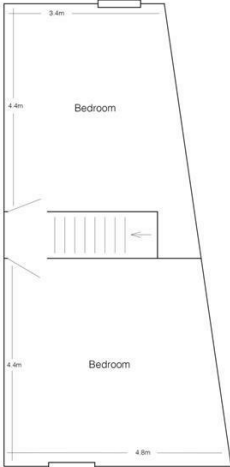
Basement



Ground Floor



First Floor



Second Floor

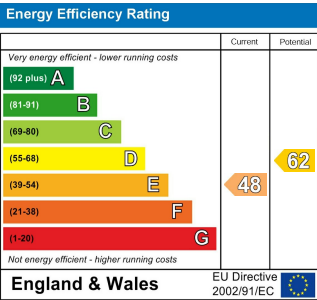
Call us on

01132782201

phil@sjm-properties.com
 sjm-properties.com

Council Tax Band

C



Agents Note: Whilst every care has been taken to prepare these particulars, they are for guidance purposes only. All measurements are approximate and are for general guidance purposes only and whilst every care has been taken to ensure their accuracy, they should not be relied upon and potential buyers are advised to recheck the measurements.

SJM [©]
PROPERTIES