



Cottage

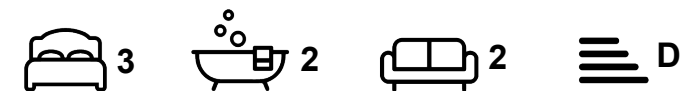
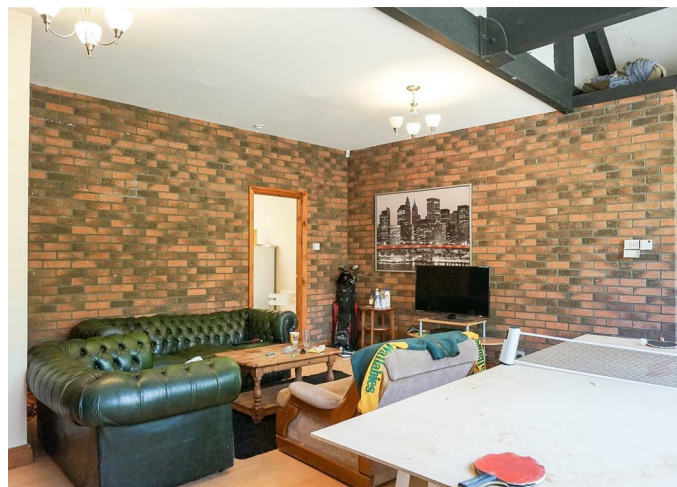
FLAT 1, BEECH HOUSE 50/52 HEADINGLEY LANE, HYDE PARK, LEEDS, LS6 2BW

Per Week

£369 Per

FEATURES

- 3 Bedrooms
- Hyde Park
- Gas C/H
- Cottage
- Furnished Property



SJM ©
PROPERTIES

3 Bedroom Cottage located in Leeds

Stunning converted Victorian mansion set back from Headingley Lane, situated near Johnson's dry cleaners. It is close to the University and a short walk to Headingley. Each of the properties are very individual and full of character. This property has a very large lounge with sofa's and a modern fully fitted kitchen with a washing machine. There are three double bedrooms, a modern house bathroom with shower-bath and an En-suite shower room. There is a large garden and it benefits from free off street parking.

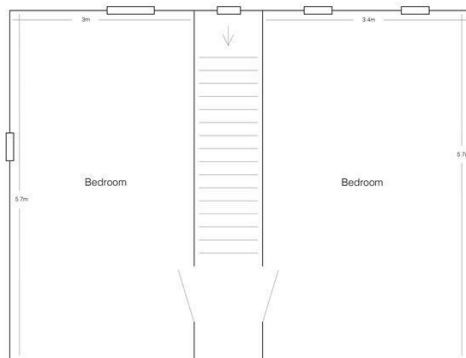
3 large double bedrooms furnished with Double bed, wardrobe, chest of drawers, desk and chair.

BILLS CAN BE INCLUDED



Ground Floor

1 Beech House
(drawing not to scale)



First Floor

Call us on

01132782201

phil@sjm-properties.com

sjm-properties.com

Council Tax Band

A

Energy Efficiency Rating		
	Current	Potential
Very energy efficient - lower running costs		
(92 plus) A		
(81-91) B		
(69-80) C		
(55-68) D		
(39-54) E	55	63
(21-38) F		
(1-20) G		
Not energy efficient - higher running costs		
England & Wales	EU Directive 2002/91/EC	

Agents Note: Whilst every care has been taken to prepare these particulars, they are for guidance purposes only. All measurements are approximate and are for general guidance purposes only and whilst every care has been taken to ensure their accuracy, they should not be relied upon and potential buyers are advised to recheck the measurements.

SJM [©]
PROPERTIES