



House

# 25 ASHVILLE GROVE, HYDE PARK, LEEDS, LS6 1LY

Per Week

## £297 Per

### FEATURES

- 3 Bedrooms
- Hyde Park
- Gas C/H
- House
- Furnished Property



**SJM** ©  
**PROPERTIES**

# 3 Bedroom House located in Leeds

Modernised terraced house in Hyde Park, near to the Co-op on Cardigan Road and Burley train station. There is a spacious lounge furnished with sofas and a separate fully fitted modern kitchen with breakfast bar and washing machine. Three double bedrooms furnished with a double bed, a wardrobe, desk and chair. A tiled bathroom with a shower over the bath. It has double glazing and gas central heating throughout. There is a patio area at the back with a table and seating.

BILLS CAN BE INCLUDED ON REQUEST

Call us on

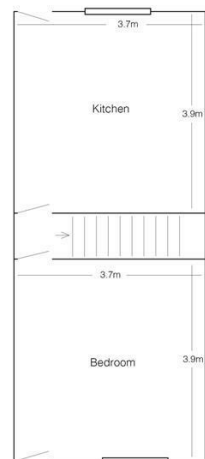
**01132782201**

**phil@sjm-properties.com**

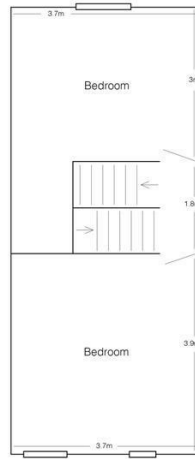
**sjm-properties.com**

**Council Tax Band**

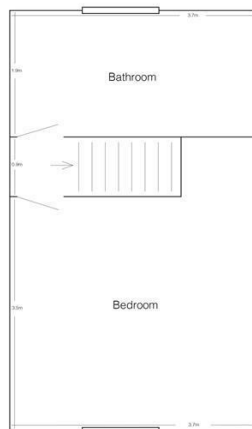
**B**



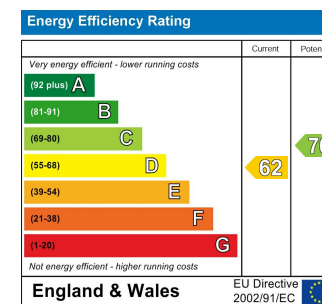
Ground Floor



First Floor



Second Floor



Agents Note: Whilst every care has been taken to prepare these particulars, they are for guidance purposes only. All measurements are approximate and are for general guidance purposes only and whilst every care has been taken to ensure their accuracy, they should not be relied upon and potential buyers are advised to recheck the measurements.

**SJM** <sup>©</sup>  
**PROPERTIES**