



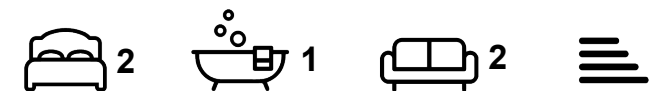
House

15 QUARRY PLACE, WOODHOUSE, LEEDS, LS6 2JT

Per Week

£218 Per

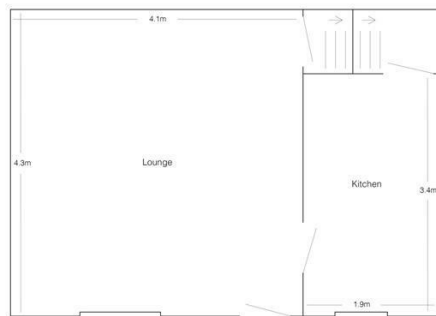
FEATURES



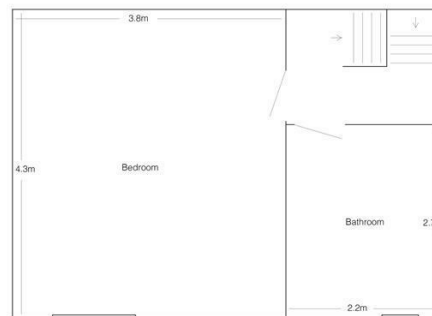
SJM ©
PROPERTIES

2 Bedroom House located in Leeds

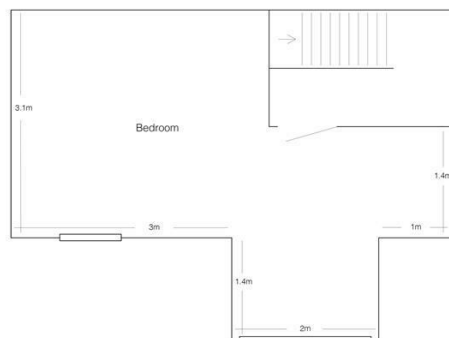
Fully modernised terraced house in a great location only 5 minutes walk from Leeds University and close to the local shops and amenities. This property comprises of a spacious carpeted lounge with an original fireplace and sofas. A separate fully fitted modern kitchen with a washing machine. Leading up to the first floor is a double bedroom fitted with a double bed, a wardrobe, desk and chair. A tiled bathroom with a shower over the bath. Leading up to the second floor is the second double bedroom also fitted with a double bed, a wardrobe, desk and chair. The property benefits from double glazing and gas central heating throughout.



Ground Floor



First Floor



Second Floor

Call us on

01132782201

phil@sjm-properties.com

sjm-properties.com

Council Tax Band

A

Energy Efficiency Rating		
	Current	Potential
Very energy efficient - lower running costs		
(92 plus) A		
(81-91) B		
(69-80) C		
(55-68) D		
(39-54) E		
(21-38) F		
(1-20) G		
Not energy efficient - higher running costs		
England & Wales	EU Directive 2002/91/EC	

Agents Note: Whilst every care has been taken to prepare these particulars, they are for guidance purposes only. All measurements are approximate and are for general guidance purposes only and whilst every care has been taken to ensure their accuracy, they should not be relied upon and potential buyers are advised to recheck the measurements.

SJM [©]
PROPERTIES