



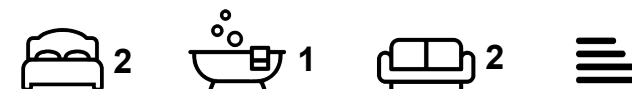
House

**30 ADWICK PLACE,
BURLEY, LEEDS,
LS4 2RA**

Per Week

£222 Per

FEATURES



SJM ©
PROPERTIES

2 Bedroom House located in Leeds

Call us on

01132782201

phil@sjm-properties.com
sjm-properties.com

Council Tax Band

A

Excellent 4-Floor House in Burley

This impressive house, set over four floors, is located in Burley near the One Stop shop. It offers ample space and modern amenities, making it an ideal home.

Key Features:

Lower Floor: Spacious fully fitted kitchen with a washing machine, dining table, and chairs.

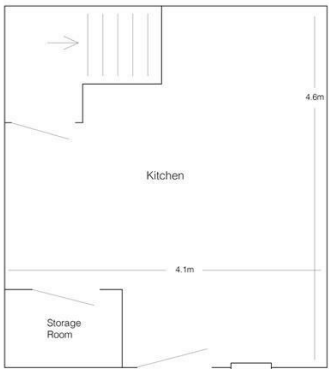
Ground Floor: Large lounge furnished with sofas, perfect for relaxation.

First Floor: Double bedroom furnished with a double bed and fitted wardrobe, along with a tiled bathroom featuring a shower over the bath.

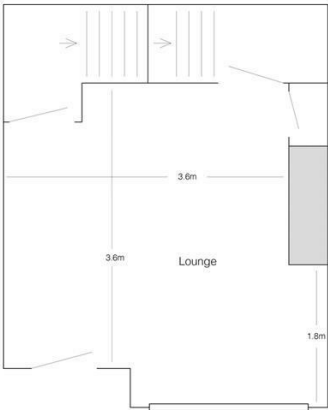
Second Floor: Another double bedroom, also furnished with a double bed and wardrobe.

Heating and Windows: Gas central heating and double glazing throughout for comfort and energy efficiency.

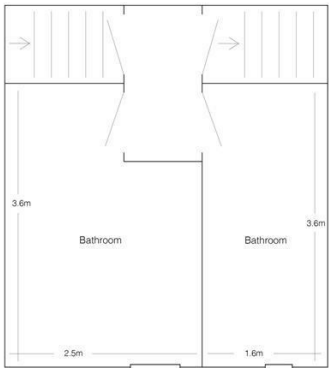
This property combines space, comfort, and convenience in a desirable location.



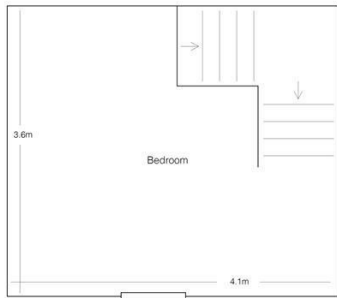
Basement



Ground Floor



First Floor



Second Floor

Energy Efficiency Rating		
	Current	Potential
Very energy efficient - lower running costs		
(92 plus) A		
(81-91) B		
(69-80) C		
(55-68) D		
(39-54) E		
(21-38) F		
(1-20) G		
Not energy efficient - higher running costs		
England & Wales	EU Directive 2002/91/EC	

Agents Note: Whilst every care has been taken to prepare these particulars, they are for guidance purposes only. All measurements are approximate and are for general guidance purposes only and whilst every care has been taken to ensure their accuracy, they should not be relied upon and potential buyers are advised to recheck the measurements.

SJM [©]
PROPERTIES