



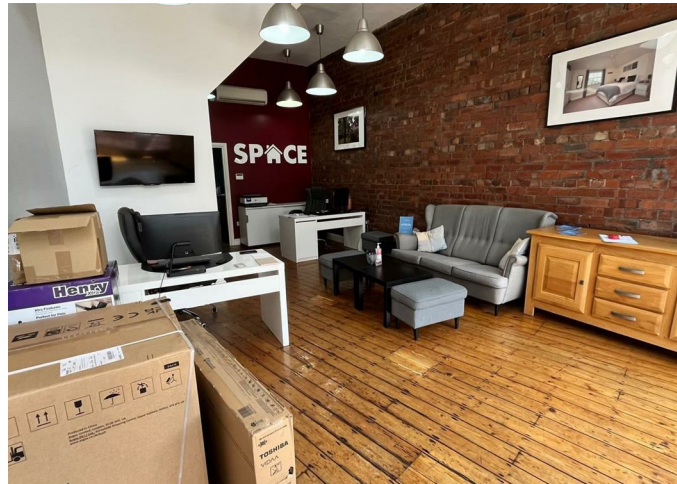
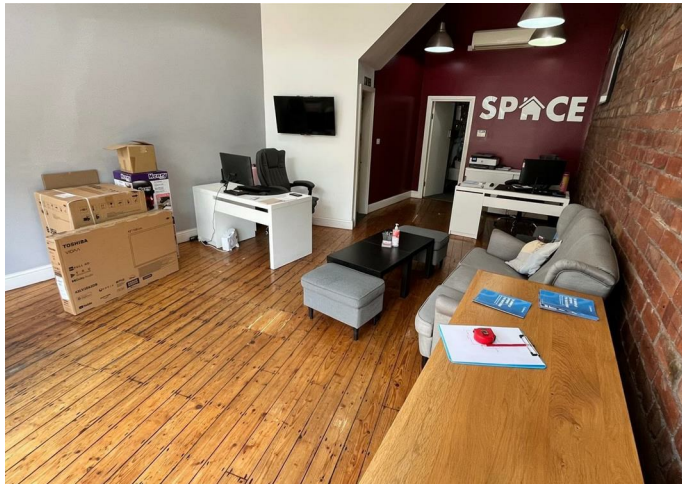
Shop

**4, THE CRESCENT,
HYDE PARK,
LEEDS, LS6 2NW**

Per Month

£1,000

FEATURES



SJM ©
PROPERTIES

0 Bedroom Shop located in Leeds

Good sized shop / office unit on the main street into Leeds City Centre close to Hyde Park Corner. This is a high footfall area due to the large number of students and the proximity to the Universities. It is currently being used a letting agents.

Flexible terms available


Call us on

01132782201

phil@sjm-properties.com

sjm-properties.com

Council Tax Band

Energy Efficiency Rating		
	Current	Potential
Very energy efficient - lower running costs		
(92 plus) A		
(81-91) B		
(69-80) C		
(55-68) D		
(39-54) E		
(21-38) F		
(1-20) G		
Not energy efficient - higher running costs		
England & Wales		EU Directive 2002/91/EC 

Agents Note: Whilst every care has been taken to prepare these particulars, they are for guidance purposes only. All measurements are approximate and are for general guidance purposes only and whilst every care has been taken to ensure their accuracy, they should not be relied upon and potential buyers are advised to recheck the measurements.

SJM 
PROPERTIES