



Flat

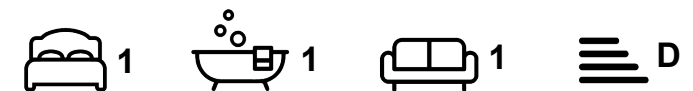
FLAT 9, BEECH HOUSE 50/52 HEADINGLEY LANE, HEADINGLEY, LEEDS, LS6 2BW

Per Month

£850 Per

FEATURES

- 1 Bedroom
- Hyde Park
- Gas C/H
- Flat
- Furnished Property



SJM ©
PROPERTIES

1 Bedroom Flat located in Leeds

Lovely newly renovated apartment in the historic converted mansion Beech House, just off Headingley Lane. The nice sized open plan lounge kitchen has a modern grey wood floor and a large double glazed window overlooking the rear courtyard. The lounge is furnished with a smart leather sofa and a table and chair, the table can be removed upon request. The brand new kitchen has plenty of storage and an integrated ceramic glass hob, oven, washer dryer and a microwave. There is a good sized double bed with brand new wardore and a double bed with under bed storage. The newly installed bathroom features a shower, w.c. Vanity sink with drawers and a light up mirror. The apartment is gas central heated throughout and the building has a large commual garden with some off street parking.

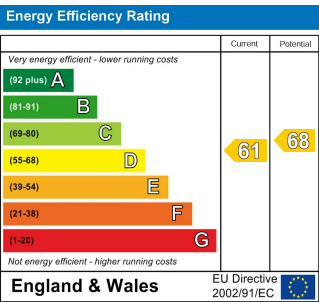
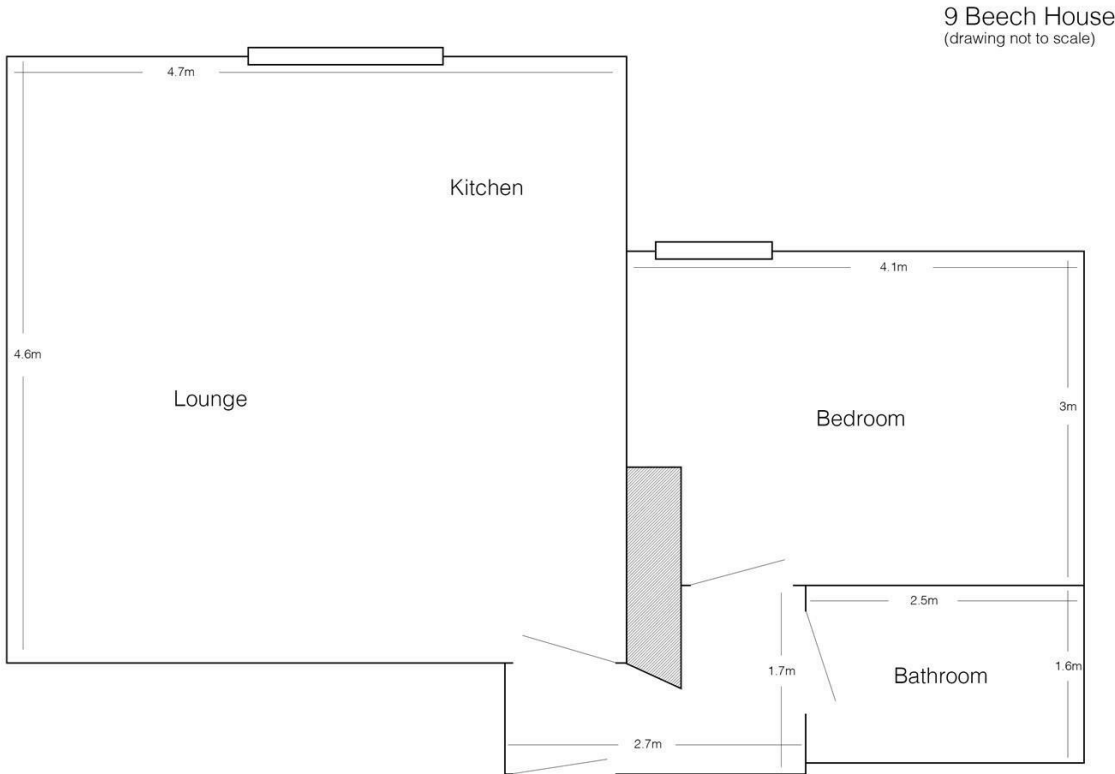
Call us on

01132782201

phil@sjm-properties.com
sjm-properties.com

Council Tax Band

A



Agents Note: Whilst every care has been taken to prepare these particulars, they are for guidance purposes only. All measurements are approximate and are for general guidance purposes only and whilst every care has been taken to ensure their accuracy, they should not be relied upon and potential buyers are advised to recheck the measurements.

SJM ©
PROPERTIES