



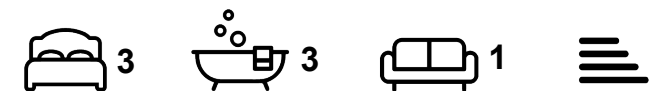
Apartment

FLAT 11, 62 OTLEY ROAD, HEADINGLEY, LEEDS, LS6 4DL

Per Week

£381 Per

FEATURES

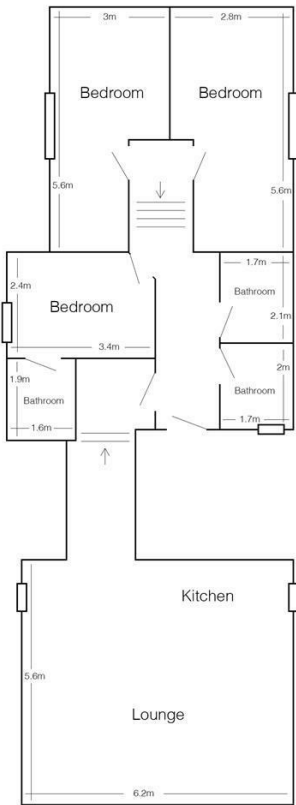


SJM ©
PROPERTIES

3 Bedroom Apartment located in Leeds

Luxurious modern apartments set in a stunning converted Victorian mansion in Headingley, where there are fabulous bars, restaurants, coffee bars and other amenities. There is a very spacious lounge full of character with wooden floors and beams on the ceiling, an open plan fitted kitchen with washing machine and a separate laundry area. There are three double bedrooms, one has an En-suite bathroom with two further house bathrooms. It has gas central heating and double glazing throughout and an alarm. There is a lawn to the rear and it benefits from some free off street parking.

THIS PROPERTY CAN BE INCLUSIVE OF GAS, ELECTRIC, WATER & WIFI FOR ONLY £156 PER PERSON PER WEEK




Flat 11, 62 Otley Road
(drawing not to scale)

Call us on

01132782201

phil@sjm-properties.com
sjm-properties.com

Council Tax Band
C

Energy Efficiency Rating		
	Current	Potential
Very energy efficient - lower running costs		
(92 plus) A		
(81-91) B		
(69-80) C		
(55-68) D		
(39-54) E		
(21-38) F		
(1-20) G		
Not energy efficient - higher running costs		
England & Wales		EU Directive 2002/91/EC 

Agents Note: Whilst every care has been taken to prepare these particulars, they are for guidance purposes only. All measurements are approximate and are for general guidance purposes only and whilst every care has been taken to ensure their accuracy, they should not be relied upon and potential buyers are advised to recheck the measurements.

SJM [©]
PROPERTIES