



Apartment

FLAT 10, 16 ASH GROVE, LEEDS, LS6 1AY

Per Week

£284 Per

FEATURES



SJM ©
PROPERTIES

2 Bedroom Apartment located in Leeds

SEASONAL BACKGROUND GAS CENTRAL HEATING INCLUDED

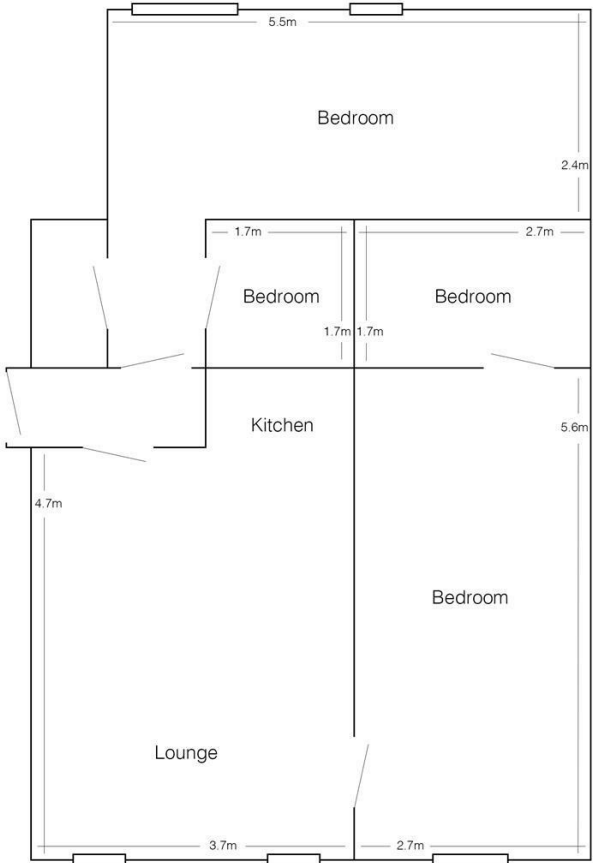
Brand new 2 bedroom furnished flat

Large open plan lounge/kitchen with washer/dryer, ceramic hob and fan assisted electric oven.

Leather sofas and flat screen TV.

2 bathrooms one of which is En-suite

Both bedrooms have double beds and flat screen tv's




Flat 10, 16 Ash Grove
(drawing not to scale)

Call us on

01132782201

phil@sjm-properties.com
sjm-properties.com

Council Tax Band
B

Energy Efficiency Rating		
	Current	Potential
Very energy efficient - lower running costs		
(92 plus) A		
(81-91) B		
(69-80) C		
(55-68) D		
(39-54) E		
(21-38) F		
(1-20) G		
Not energy efficient - higher running costs		
England & Wales		EU Directive 2002/91/EC 

Agents Note: Whilst every care has been taken to prepare these particulars, they are for guidance purposes only. All measurements are approximate and are for general guidance purposes only and whilst every care has been taken to ensure their accuracy, they should not be relied upon and potential buyers are advised to recheck the measurements.

SJM [©]
PROPERTIES