



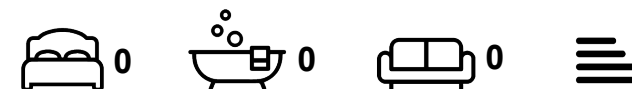
Commercial

**8, NORTH LANE,
HEADINGLEY,
LEEDS, LS6 3HE**

Per Annum

£15,600

FEATURES



SJM ©
PROPERTIES

0 Bedroom Commercial located in Leeds

Good sized office/retail unit in central Headingley. Current used by a charity but has previously been used as a letting agents.

Good sized main room with a small kitchen, w.c. and a separate office at the rear.

Approx 60 square meters with gas central heating.

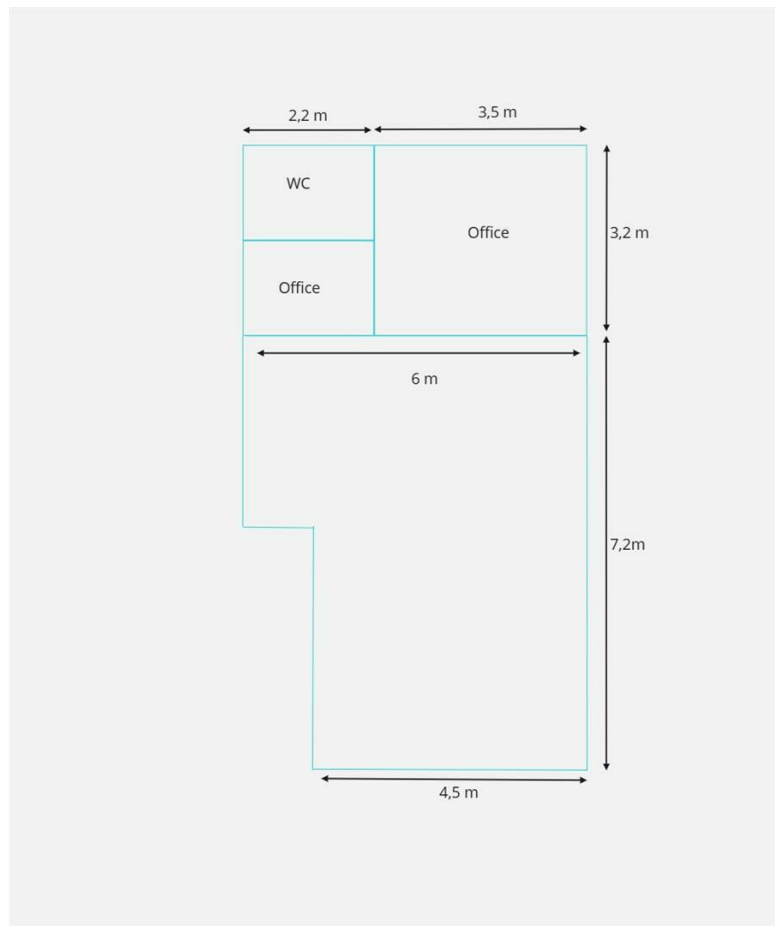
Call us on

01132782201

phil@sjm-properties.com

sjm-properties.com

Council Tax Band



Energy Efficiency Rating		
	Current	Potential
Very energy efficient - lower running costs		
(92 plus) A		
(81-91) B		
(69-80) C		
(55-68) D		
(39-54) E		
(21-38) F		
(1-20) G		
Not energy efficient - higher running costs		
England & Wales		EU Directive 2002/91/EC

Agents Note: Whilst every care has been taken to prepare these particulars, they are for guidance purposes only. All measurements are approximate and are for general guidance purposes only and whilst every care has been taken to ensure their accuracy, they should not be relied upon and potential buyers are advised to recheck the measurements.

SJM [©]
PROPERTIES