



Flat

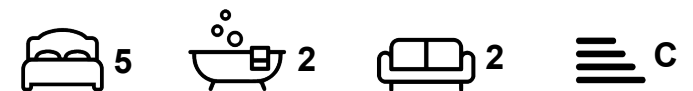
FLAT 2, HEADINGLEY RISE WELTON ROAD, HYDE PARK, LEEDS, LS6 1EE

Per Person Per Week

£102 Per

FEATURES

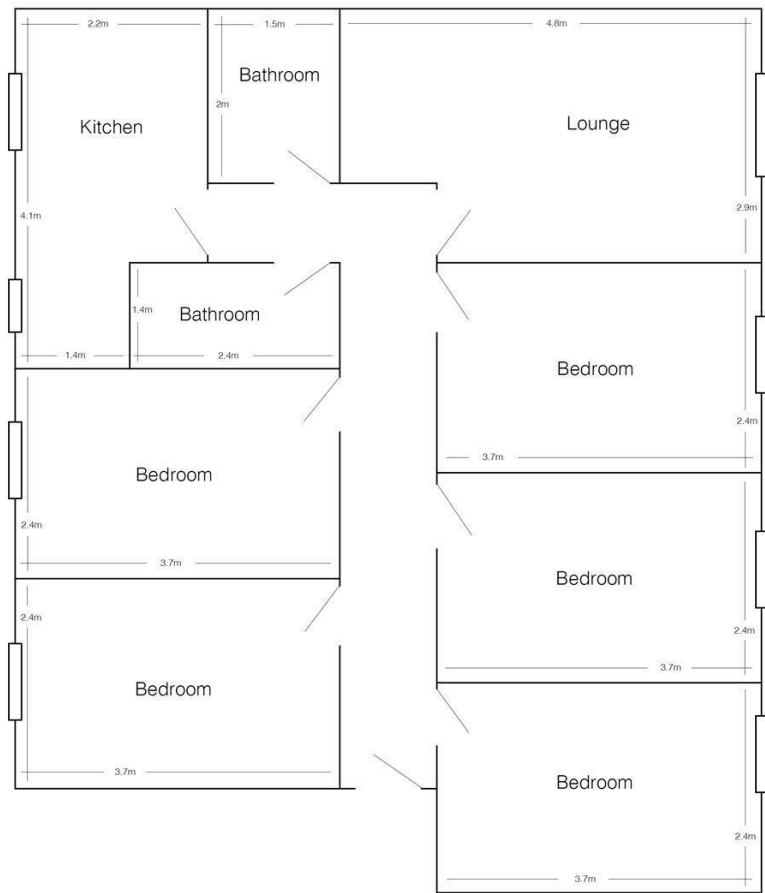
- 5 Bedrooms
- Hyde Park
- Gas C/H
- Flat
- Furnished Property



SJM ©
PROPERTIES

5 Bedroom Flat located in Leeds

Modern apartment in a gated complex in central Hyde Park with bills included.
There is a good sized lounge furnished with sofas, 2 bathrooms with showers and a modern fitted kitchen with the usual appliances including a washing machine, oven, hob and fridge freezer.
All 5 bedrooms are furnished with a bed, fitted desk and wardrobe. A chair can also be provided on request.
THE RENT INCLUDES GAS< WATER< ELECTRIC AND WIFI



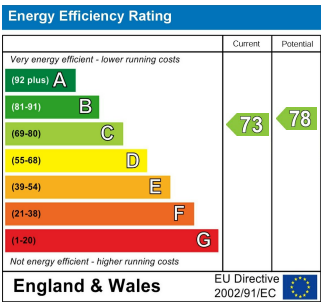
2 Headingley Rise
(drawing not to scale)

Call us on

01132782201

phil@sjm-properties.com
sjm-properties.com

Council Tax Band
B



Agents Note: Whilst every care has been taken to prepare these particulars, they are for guidance purposes only. All measurements are approximate and are for general guidance purposes only and whilst every care has been taken to ensure their accuracy, they should not be relied upon and potential buyers are advised to recheck the measurements.

SJM [©]
PROPERTIES