

Flat

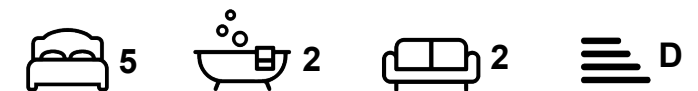
# FLAT 6, HEADINGLEY RISE WELTON ROAD, HYDE PARK, LEEDS, LS6 1EE

Per Week

## £510 Per

### FEATURES

- 5 Bedrooms
- Hyde Park
- Gas C/H
- Flat
- Furnished Property



**SJM** ©  
**PROPERTIES**

# 5 Bedroom Flat located in Leeds

Nice 5 bedroom apartment in a gated complex in central Hyde Park just off Brudenell Road.

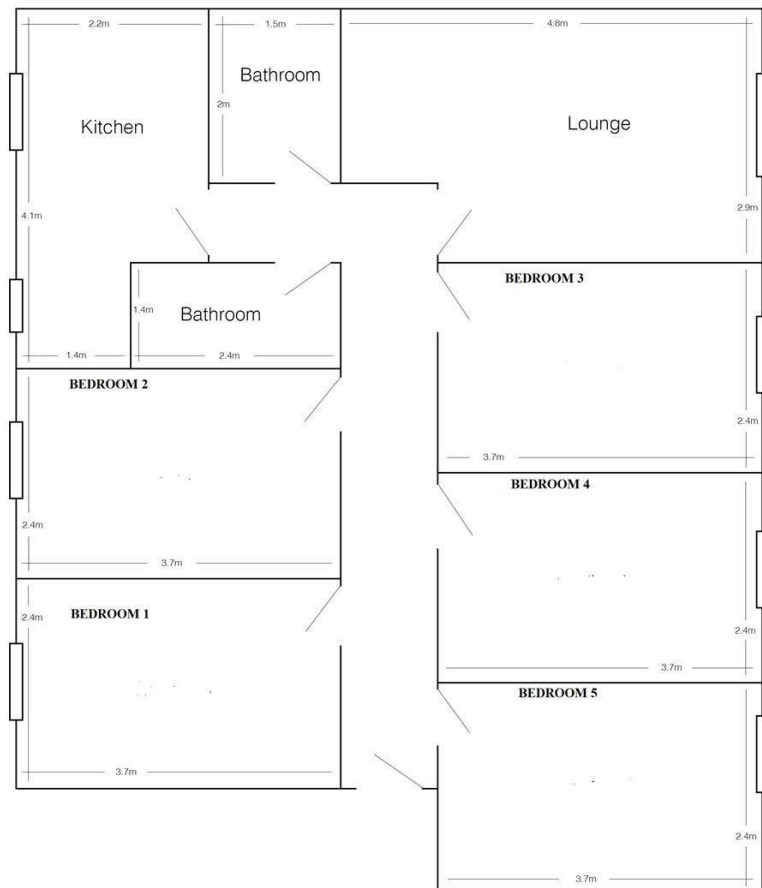
The apartment has 5 equal sized bedrooms with fitted wardrobe, desk and chest of drawers. There is also a bed and chair.

The separate lounge is furnished with sofas. There are also 2 shower rooms.

The kitchen is fitted with modern units and has integrated oven and hob and freestanding washing machine and fridge freezer. The flat is double glazed and gas central heated.

You can rent this property with utility bills included for only £102 per person per week.

Copy and paste for virtual tour - <https://www.youtube.com/shorts/EaZDK0UXyro>



6 Headingley Rise  
(drawing not to scale)

Call us on

**01132782201**

**phil@sjm-properties.com**

**sjm-properties.com**

**Council Tax Band**

**B**

Energy Efficiency Rating		
	Current	Potential
Very energy efficient - lower running costs		
(92 plus) <b>A</b>		
(81-91) <b>B</b>		
(69-80) <b>C</b>		72
(55-68) <b>D</b>	57	
(39-54) <b>E</b>		
(21-38) <b>F</b>		
(1-20) <b>G</b>		
Not energy efficient - higher running costs		
England & Wales		EU Directive 2002/91/EC

Agents Note: Whilst every care has been taken to prepare these particulars, they are for guidance purposes only. All measurements are approximate and are for general guidance purposes only and whilst every care has been taken to ensure their accuracy, they should not be relied upon and potential buyers are advised to recheck the measurements.

**SJM** <sup>©</sup>  
**PROPERTIES**