



Flat

FLAT 4, HEADINGLEY RISE WELTON ROAD, HYDE PARK, LEEDS, LS6 1EE

Per Week

£510 Per

FEATURES

- 5 Bedrooms
- Hyde Park
- Gas C/H
- Flat
- Furnished Property



SJM ©
PROPERTIES

5 Bedroom Flat located in Leeds

Call us on

01132782201

phil@sjm-properties.com

sjm-properties.com

Council Tax Band

B

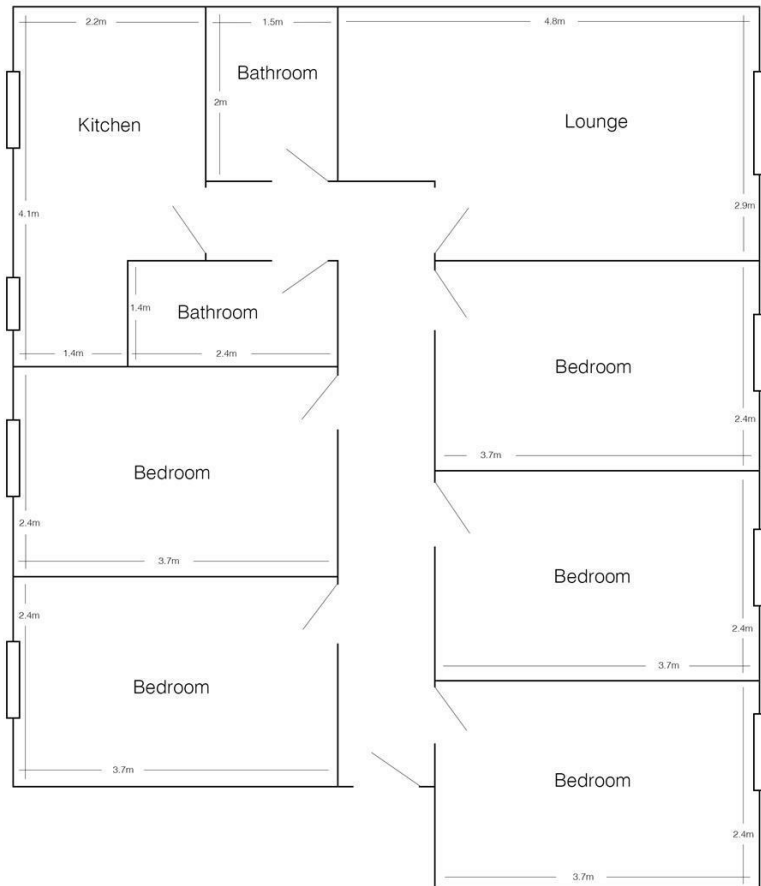
Modern furnished flat in central Hyde park located behind the Sainsburys.

Large open plan lounge kitchen with wood floor

2 bathrooms

5 equal sized double bedrooms, gas central headed and double glazed throughout.

THE RENT OF £102 PER PERSON PER WEEK INCLUDES UTILITY BILLS



4 Headingley Rise
(drawing not to scale)

| Energy Efficiency Rating | | |
|---|-------------------------|-----------|
| | Current | Potential |
| Very energy efficient - lower running costs | | |
| (92 plus) A | | |
| (81-91) B | 81 | 83 |
| (69-80) C | | |
| (55-68) D | | |
| (39-54) E | | |
| (21-38) F | | |
| (1-20) G | | |
| Not energy efficient - higher running costs | | |
| England & Wales | EU Directive 2002/91/EC | |

Agents Note: Whilst every care has been taken to prepare these particulars, they are for guidance purposes only. All measurements are approximate and are for general guidance purposes only and whilst every care has been taken to ensure their accuracy, they should not be relied upon and potential buyers are advised to recheck the measurements.

SJM ©
PROPERTIES