



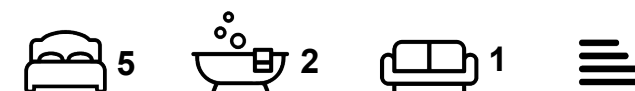
Apartment

FLAT 1, 16 ASH GROVE, HYDE PARK, LEEDS, LS6 1AY

Per Week

£650 Per

FEATURES



SJM ©
PROPERTIES

5 Bedroom Apartment located in Leeds

Call us on

01132782201

phil@sjm-properties.com

sjm-properties.com

Council Tax Band

D

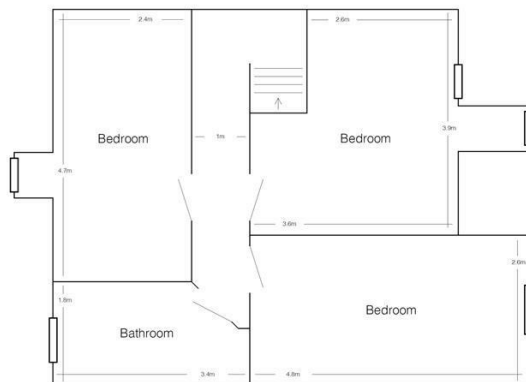
THE RENT ON THIS FLAT INCLUDES FREE SEASONAL BACKGROUND GAS CENTRAL HEATING AND ELECTRIC, WATER, WIFI

Very modern five bedroom flat in the middle of Hyde Park. Open plan lounge and kitchen with two seater sofas and a flat screen TV. All bedrooms include double beds, wardrobes, desks and desk chairs. Kitchen includes washing machine, cooker, hob and fridge freezer. Very close to the Hyde Park, pubs, shops and other amenities the area has to offer. It has gas central heating and double glazing throughout and an alarm. It benefits from some free off street parking.


Copy and paste for video tour - <https://youtu.be/VaGyGeMZmig>



Ground Floor



First Floor

Energy Efficiency Rating		
	Current	Potential
Very energy efficient - lower running costs		
(92 plus) A		
(81-91) B		
(69-80) C		
(55-68) D		
(39-54) E		
(21-38) F		
(1-20) G		
Not energy efficient - higher running costs		
England & Wales		EU Directive 2002/91/EC 

Agents Note: Whilst every care has been taken to prepare these particulars, they are for guidance purposes only. All measurements are approximate and are for general guidance purposes only and whilst every care has been taken to ensure their accuracy, they should not be relied upon and potential buyers are advised to recheck the measurements.

SJM [©]
PROPERTIES