



Cottage

FLAT 21, BEECH HOUSE 50/52 HEADINGLEY LANE, HEADINGLEY, LEEDS, LS6 2BW

Per Week

£240 Per

FEATURES

- 2 Bedrooms
- Hyde Park
- Gas C/H
- Cottage
- Furnished Property



SJM ©
PROPERTIES

2 Bedroom Cottage located in Leeds

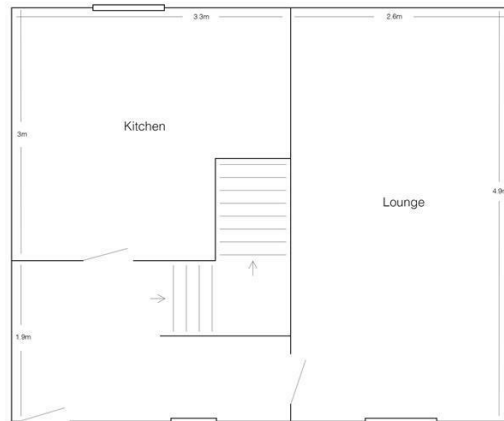
Lovely period cottage set in the grounds of the historic Beech House. The cottage can be found in the rear courtyard, where there is ample parking.

The cottage comprises of a good sized modern fitted kitchen with integrated oven and hob as well as a free standing fridge freezer and washing machine.

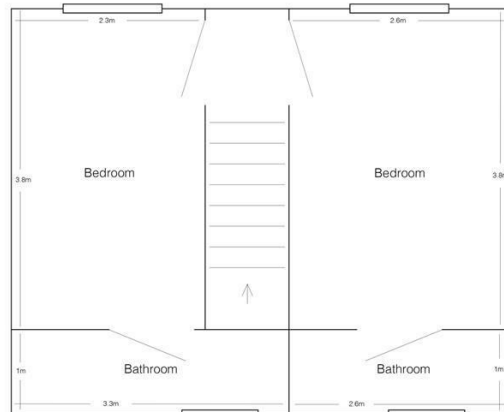
The lounge is carpeted and furnished with sofas.

Both bedrooms feature En-suite shower rooms and have double beds and wardrobes.

The property is gas central heated and residents have the use of the large communal garden.



Ground Floor



First Floor

Call us on

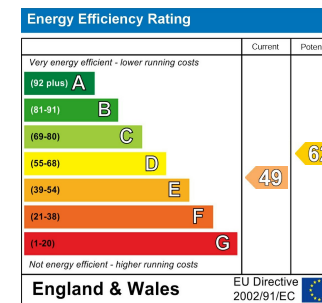
01132782201

phil@sjm-properties.com

sjm-properties.com

Council Tax Band

B



Agents Note: Whilst every care has been taken to prepare these particulars, they are for guidance purposes only. All measurements are approximate and are for general guidance purposes only and whilst every care has been taken to ensure their accuracy, they should not be relied upon and potential buyers are advised to recheck the measurements.

SJM [©]
PROPERTIES