



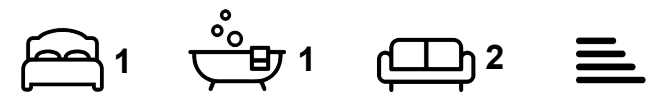
House

# 11 QUARRY PLACE, WOODHOUSE, LEEDS, LS6 2JT

Per Week

## £104 Per

FEATURES



**SJM** ©  
**PROPERTIES**

# 1 Bedroom House located in Leeds

Call us on

**01132782201**

**phil@sjm-properties.com**

**sjm-properties.com**

**Council Tax Band**

**A**

1 ROOM AVAILABLE IN A 2 BEDROOM HOUSE SHARE, SHARING WITH A MALE WORKING PROFESSIONAL IN HIS EARLY 20'S

Fully Modernised Terraced House Near Leeds University and only a short 20 minute walk from the city centre

This fully modernised terraced house is ideally located just a 5-minute walk from Leeds University and close to local shops and amenities.

Key Features:

Location:

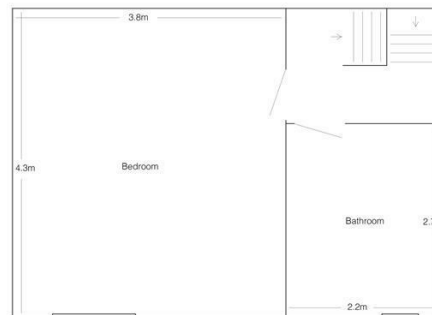
Only 5 minutes walk from Leeds University

Close to local shops and amenities

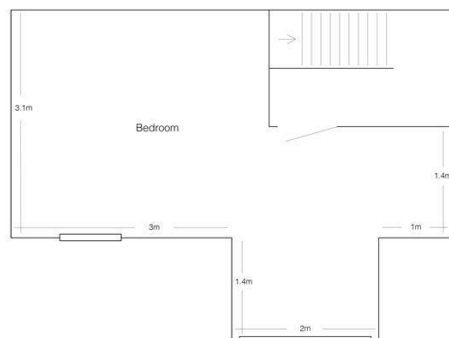
Lounge:



Ground Floor



First Floor



Second Floor

Energy Efficiency Rating		Current	Potential
<i>Very energy efficient - lower running costs</i>			
(92 plus) <b>A</b>			
(81-91) <b>B</b>			
(69-80) <b>C</b>			
(55-68) <b>D</b>			
(39-54) <b>E</b>			
(21-38) <b>F</b>			
(1-20) <b>G</b>			
<i>Not energy efficient - higher running costs</i>			
<b>England &amp; Wales</b>		EU Directive	
		2002/91/EC	

Agents Note: Whilst every care has been taken to prepare these particulars, they are for guidance purposes only. All measurements are approximate and are for general guidance purposes only and whilst every care has been taken to ensure their accuracy, they should not be relied upon and potential buyers are advised to recheck the measurements.

**SJM** <sup>©</sup>  
**PROPERTIES**