



Apartment

# 15, NEW MOON APARTMENTS 37A SHIRE OAK ROAD, HEADINGLEY, LEEDS, LS6 2DB

Per Week

## £324 Per

### FEATURES

- 3 Bedrooms
- Headingley
- 3 Bathrooms
- SECURE PARKING
- Apartment
- Furnished Property
- ENTRYPHONE
- ALARM



**SJM** ©  
**PROPERTIES**

# 3 Bedroom Apartment located in Leeds

Luxury Gated 3 bedroom 3 bathroom furnished apartment.

Large modern fitted kitchen with underfloor heating.

Lounge with wood floors

3 large double bedrooms with fitted furniture, each bedroom has its own bathroom, 2 with showers and 1 with a bath.

Great location only 5 mins walk from The Box in central Headingley.

Off street parking at no extra cost.

RENT THIS APARTMENT WITH BILLS INCLUDED FOR ONLY £137 PER PERSON PER WEEK

Call us on

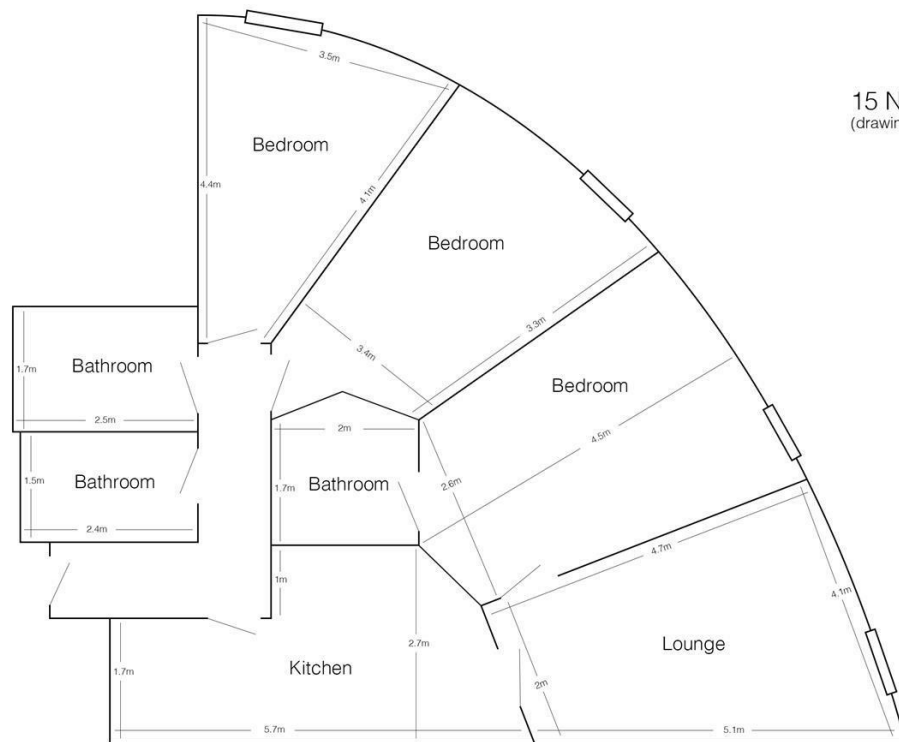
**01132782201**

**phil@sjm-properties.com**

**sjm-properties.com**

**Council Tax Band**

**C**



15 New Moon  
(drawing not to scale)

Energy Efficiency Rating		Current	Potential
<i>Very energy efficient - lower running costs</i>			
(92 plus) <b>A</b>			
(81-91) <b>B</b>			
(69-80) <b>C</b>		63	63
(55-68) <b>D</b>			
(39-54) <b>E</b>			
(21-38) <b>F</b>			
(1-20) <b>G</b>			
<i>Not energy efficient - higher running costs</i>			
<b>England &amp; Wales</b>		EU Directive 2002/91/EC	

Agents Note: Whilst every care has been taken to prepare these particulars, they are for guidance purposes only. All measurements are approximate and are for general guidance purposes only and whilst every care has been taken to ensure their accuracy, they should not be relied upon and potential buyers are advised to recheck the measurements.

**SJM** <sup>©</sup>  
**PROPERTIES**