



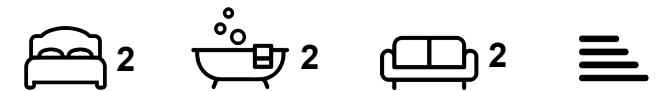
Apartment

**FLAT 7, 62 OTLEY ROAD,
HEADINGLEY,
LEEDS, LS6 4DL**

Per Week

£240 Per

FEATURES



SJM ©
PROPERTIES

2 Bedroom Apartment located in Leeds

Luxurious Modern Apartments in a Converted Victorian Mansion

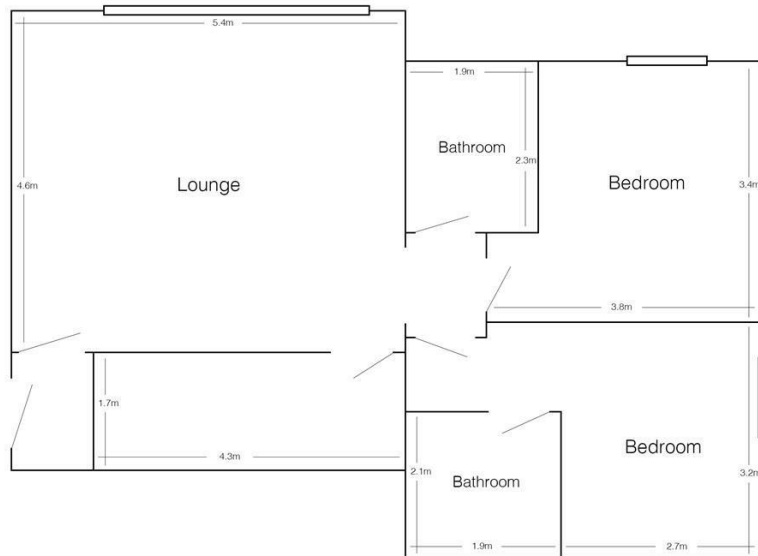
Located in the vibrant area of Headingley, these luxurious modern apartments are set within a beautifully converted Victorian mansion. The area boasts an array of fabulous bars, restaurants, coffee shops, and other amenities.

The apartments feature a spacious lounge with elegant wooden flooring and two leather sofas. The open-plan, fully-fitted modern kitchen includes a washing machine for your convenience.

Each apartment offers two double bedrooms, each equipped with a fitted wardrobe, chest of drawers, desk, and chair. Both bedrooms have fully tiled en-suite bathrooms with showers over the baths.

Additional features include double glazing, gas central heating, and a security alarm system. Residents can also enjoy a well-maintained lawn at the rear of the property and benefit from free off-street parking.

Flat 7, 62 Otley Road
(drawing not to scale)



Call us on

01132782201

phil@sjm-properties.com

sjm-properties.com

Council Tax Band

C

Energy Efficiency Rating		Current	Potential
<i>Very energy efficient - lower running costs</i>			
(92 plus) A			
(81-91) B			
(69-80) C			
(55-68) D			
(39-54) E			
(21-38) F			
(1-20) G			
<i>Not energy efficient - higher running costs</i>			
England & Wales		EU Directive 2002/91/EC	

Agents Note: Whilst every care has been taken to prepare these particulars, they are for guidance purposes only. All measurements are approximate and are for general guidance purposes only and whilst every care has been taken to ensure their accuracy, they should not be relied upon and potential buyers are advised to recheck the measurements.

SJM
PROPERTIES