



Flat

**FLAT 3B, 21-25  
HEADINGLEY AVE,  
HEADINGLEY,  
LEEDS, LS6 3EP**

Per Week

**£354 Per**

FEATURES



**SJM** ©  
**PROPERTIES**

# 3 Bedroom Flat located in Leeds

Purpose built luxury 3 bedroom furnished apartment.

Open plan lounge kitchen with wood floors, Bathroom with shower bath, 3 large double bedrooms set over 2 floors with En-suite bathrooms.

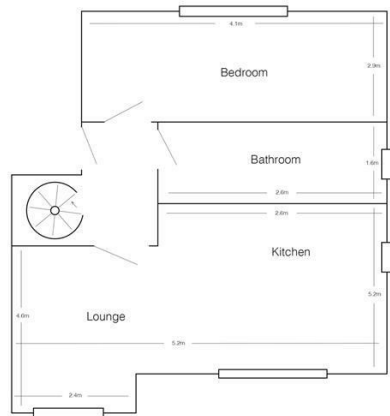
3rd bedroom accessed via a feature spiral staircase.

All bedrooms furnished with double beds, wardrobe, chest of drawers, desk and chair.

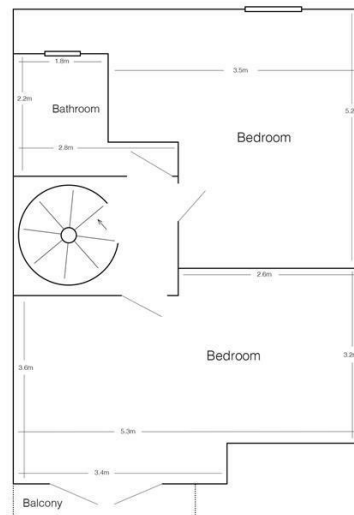
Double glazed with gas central heating.

Great location only a short walk to Leeds Uni and close to Headingley stadium.

YOU CAN RENT THIS APARTMENT WITH BILLS INCLUDED FOR A TOTAL OF £147 PER PERSON PER WEEK



Ground Floor



First Floor

Call us on

**01132782201**

**phil@sjm-properties.com**

**sjm-properties.com**

**Council Tax Band**

**A**

Energy Efficiency Rating		Current	Potential
<i>Very energy efficient - lower running costs</i>			
(92 plus)	<b>A</b>		
(81-91)	<b>B</b>		
(69-80)	<b>C</b>	75	79
(55-68)	<b>D</b>		
(39-54)	<b>E</b>		
(21-38)	<b>F</b>		
(1-20)	<b>G</b>		
<i>Not energy efficient - higher running costs</i>			
<b>England &amp; Wales</b>		EU Directive 2002/91/EC	

Agents Note: Whilst every care has been taken to prepare these particulars, they are for guidance purposes only. All measurements are approximate and are for general guidance purposes only and whilst every care has been taken to ensure their accuracy, they should not be relied upon and potential buyers are advised to recheck the measurements.

**SJM** <sup>©</sup>  
**PROPERTIES**