



House

17 ELSHAM TERRACE, BURLEY, LEEDS, LS4 2RB

Per Week

£285 Per

FEATURES



SJM ©
PROPERTIES

95 Bedroom House located in Leeds

Call us on

01132782201

phil@sjm-properties.com

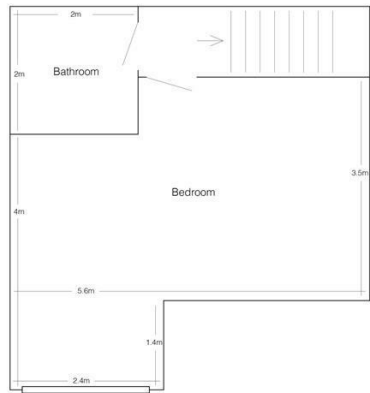
sjm-properties.com

Council Tax Band

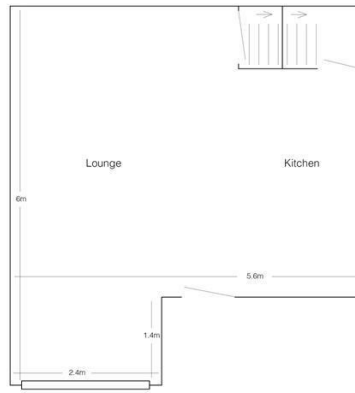
A

Fully modernised end terrace house in Burley, near the One Stop shop. There is a spacious lounge furnished with leather sofas and a fully fitted modern open plan kitchen with a washing machine. Three double bedrooms furnished with a double bed, a wardrobe, chest of drawers, desk and chair. Two bathrooms; one bathroom has a shower over the bath and the other is a shower room. It has double glazing and gas central heating throughout and an alarm.

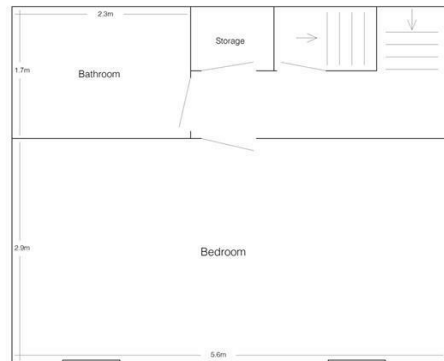
YOU CAN RENT THIS HOUSE WITH GAS, WATER, ELECTICITY, VIRGIN WIFI AND TV LICENCE INCLUDED FOR A TOTAL OF £124 PER PERSON PER WEEK



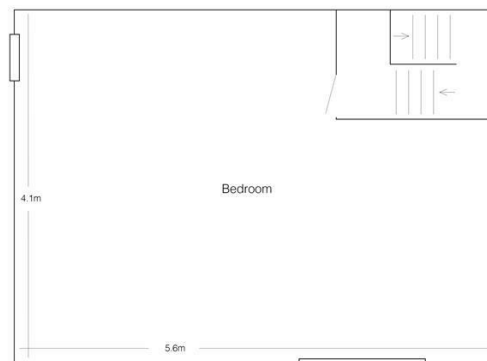
Basement



Ground Floor



First Floor



Second Floor

Energy Efficiency Rating		Current	Potential
<i>Very energy efficient - lower running costs</i>			
(92 plus)	A		
(81-91)	B		
(69-80)	C		
(55-68)	D		
(39-54)	E		
(21-38)	F		
(1-20)	G		
<i>Not energy efficient - higher running costs</i>			
England & Wales		EU Directive	
		2002/91/EC	

Agents Note: Whilst every care has been taken to prepare these particulars, they are for guidance purposes only. All measurements are approximate and are for general guidance purposes only and whilst every care has been taken to ensure their accuracy, they should not be relied upon and potential buyers are advised to recheck the measurements.

SJM [©]
PROPERTIES