



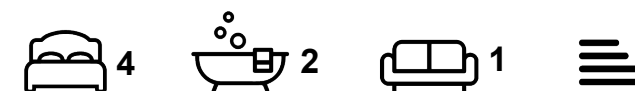
Apartment

FLAT 3, 16 ASH GROVE, HYDE PARK, LEEDS, LS6 1AY

Per Week

£552 Per

FEATURES



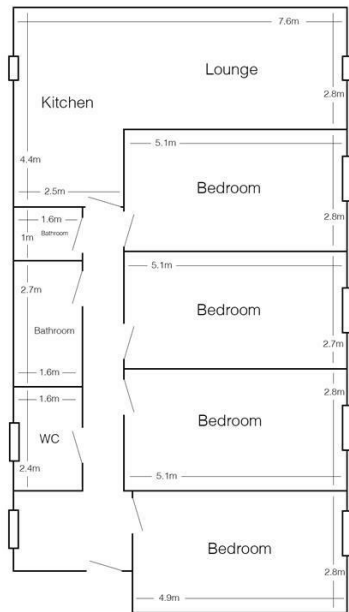
SJM ©
PROPERTIES

4 Bedroom Apartment located in Leeds

Newly renovated modern apartment in the centre of Hyde Park and a very short walk from Leeds Uni. 1 bathroom with a toilet sink and bath, 1 separate toilet with a sink and 1 separate shower, all brand new. Open plan kitchen with new units, free standing fridge freezers, washer dryer and integrated fan oven and hob. The carpeted lounge is furnished with sofas and has low voltage LED lighting. All 4 large bedrooms have double beds, wardrobe/hanging space and desk top with a chair.

THE PROPERTY IS INCLUSIVE OF SEASONAL BACKGROUND GAS CENTRAL, WATER RATES, ELECTRICITY, WIFI

Copy and paste for video tour - <https://youtube.com/shorts/dglls-Xwgfw>



Flat 3, 16 Ash Grove
(drawing not to scale)

Call us on

01132782201

phil@sjm-properties.com
sjm-properties.com

Council Tax Band

C

Energy Efficiency Rating		
	Current	Potential
Very energy efficient - lower running costs		
(92 plus) A		
(81-91) B		
(69-80) C		
(55-68) D		
(39-54) E		
(21-38) F		
(1-20) G		
Not energy efficient - higher running costs		
England & Wales		EU Directive 2002/91/EC

Agents Note: Whilst every care has been taken to prepare these particulars, they are for guidance purposes only. All measurements are approximate and are for general guidance purposes only and whilst every care has been taken to ensure their accuracy, they should not be relied upon and potential buyers are advised to recheck the measurements.

SJM [©]
PROPERTIES