



House

**43 CLARENDON
ROAD, LEEDS, LS2
9NZ**

Per Week

£984 Per

FEATURES



SJM ©
PROPERTIES

8 Bedroom House located in Leeds

Call us on

01132782201

phil@sjm-properties.com

sjm-properties.com

Council Tax Band

C

THE RENT ON THIS HOUSE CAN INCLUDE GAS CENTRAL, WATER RATES, ELECTRICITY AND VIRGIN BROADBAND FOR ONLY £142 PER PERSON PER WEEK
2 BRAND NEW BATHROOMS FITTED SUMMER 2023

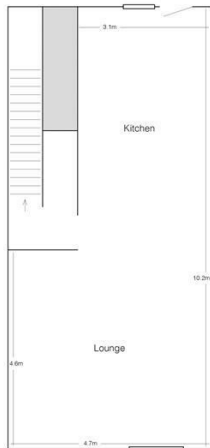
A fabulous large modern terrace house set over four floors near to Leeds University and the city centre.

There is a very spacious lounge furnished with sofas and a fully fitted modern open plan kitchen with a washing machine, 2 fridge freezers, 2 fan ovens and 2 hobs.

All the double bedrooms are furnished with a double bed, a wardrobe, chest of drawers, desk and chair.

There are two bathrooms.

It has gas central heating and double glazing throughout and an alarm.



Basement



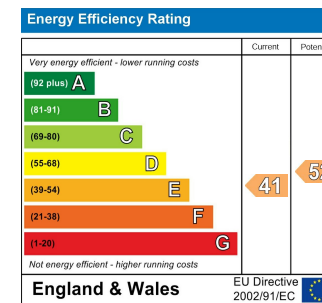
Ground Floor



First Floor



Second Floor



Agents Note: Whilst every care has been taken to prepare these particulars, they are for guidance purposes only. All measurements are approximate and are for general guidance purposes only and whilst every care has been taken to ensure their accuracy, they should not be relied upon and potential buyers are advised to recheck the measurements.

SJM [©]
PROPERTIES