



Flat

# FLAT 18, 10 BROOMFIELD CRES, HEADINGLEY, LEEDS, LS6 3DD

Per Week

## £250 Per

### FEATURES

- 2 Bedrooms
- Flat
- Headingley
- Furnished Property



**SJM** ©  
**PROPERTIES**

# 2 Bedroom Flat located in Leeds

Call us on

**01132782201**

**phil@sjm-properties.com**

**sjm-properties.com**

**Council Tax Band**

**A**

Luxury Apartment in Prime Location Near Headingley Stadium

This stunning purpose-built apartment offers the perfect blend of comfort and convenience. Located just a stone's throw away from Headingley Stadium and The Original Oak, you'll be at the heart of the action.

Features:

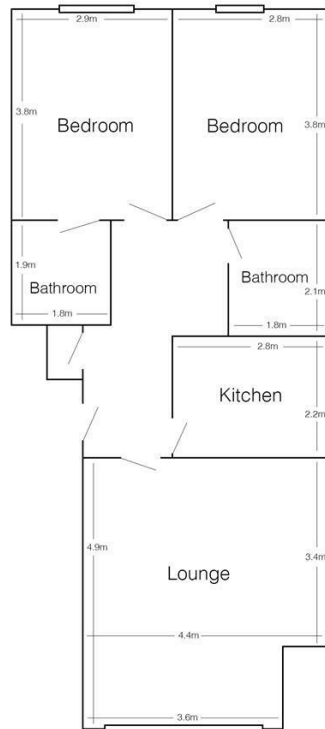
**Spacious Lounge:** Enjoy the large lounge area with elegant wooden floors, furnished with two luxurious leather sofas, perfect for relaxing or entertaining guests.

**Modern Kitchen:** A separate, fully-fitted kitchen equipped with a washing machine, ensuring all your culinary needs are met.

**Comfortable Bedrooms:** Two generously sized double bedrooms, each featuring fitted wardrobes, chest of drawers, desks, and chairs, providing ample storage and workspace.

**Stylish Bathrooms:** Two fully tiled bathrooms, including one en suite, offering a touch of luxury and convenience.

**Additional Amenities:** Benefit from double glazing, gas central heating, and off-street parking, ensuring comfort and security year-round.



Flat 18, 10 Broomfield Crescent  
(drawing not to scale)

Energy Efficiency Rating		Current	Potential
<i>Very energy efficient - lower running costs</i>			
(92 plus) <b>A</b>			
(81-91) <b>B</b>			
(69-80) <b>C</b>			
(55-68) <b>D</b>			
(39-54) <b>E</b>			
(21-38) <b>F</b>			
(1-20) <b>G</b>			
<i>Not energy efficient - higher running costs</i>			
<b>England &amp; Wales</b>		EU Directive 2002/91/EC	

Agents Note: Whilst every care has been taken to prepare these particulars, they are for guidance purposes only. All measurements are approximate and are for general guidance purposes only and whilst every care has been taken to ensure their accuracy, they should not be relied upon and potential buyers are advised to recheck the measurements.

**SJM** <sup>©</sup>  
**PROPERTIES**