



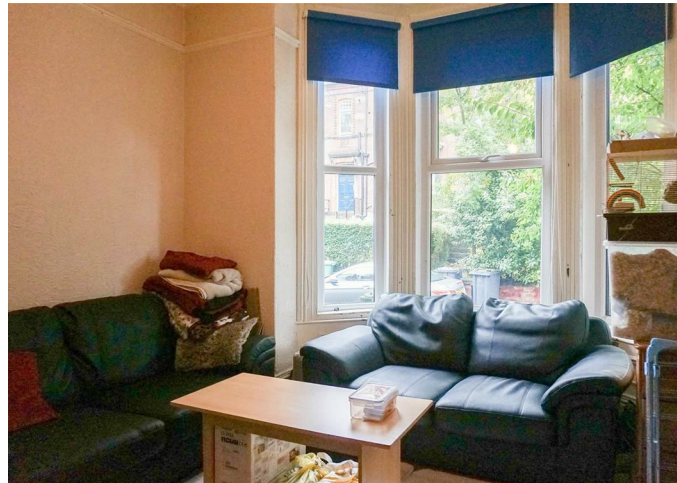
Apartment

FLAT 1, 4 REGENT PARK TERRACE, HYDE PARK, LEEDS, LS6 2AX

Per Week

£180 Per

FEATURES



SJM ©
PROPERTIES

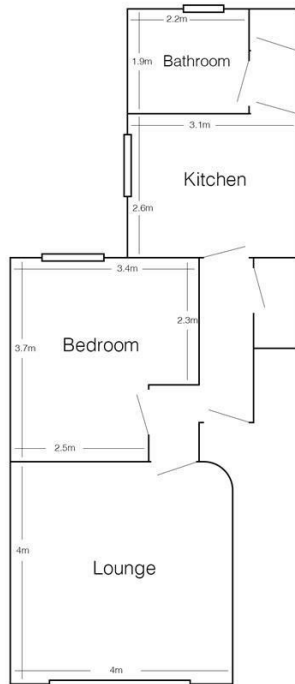
1 Bedroom Apartment located in Leeds

Fully modernized one-bedroom flat located in a prime area of Hyde Park, near the park, shops, pubs, and numerous other amenities. Just a short walk from the University of Leeds.

The property features a spacious lounge with large windows, providing plenty of natural light. The separate modern kitchen includes graphite worktops and is equipped with a washing machine, cooker, hob, and fridge freezer.

The tiled bathroom features a bath with a shower overhead. The bedroom is furnished with a double bed, wardrobe, desk, and desk chair.

The property also benefits from gas central heating and double glazing.



Flat 1, 4 Regents Park Terrace
(drawing not to scale)

Call us on

01132782201

phil@sjm-properties.com

sjm-properties.com

Council Tax Band

A

Energy Efficiency Rating		Current	Potential
<i>Very energy efficient - lower running costs</i>			
(92 plus) A			
(81-91) B			
(69-80) C			
(55-68) D			
(39-54) E			
(21-38) F			
(1-20) G			
<i>Not energy efficient - higher running costs</i>			
England & Wales		EU Directive 2002/91/EC	

Agents Note: Whilst every care has been taken to prepare these particulars, they are for guidance purposes only. All measurements are approximate and are for general guidance purposes only and whilst every care has been taken to ensure their accuracy, they should not be relied upon and potential buyers are advised to recheck the measurements.

SJM [©]
PROPERTIES