



Apartment

FLAT 7, 16 ASH GROVE, HYDE PARK, LEEDS, LS6 1AY

Per Week

£199 Per

FEATURES



SJM ©
PROPERTIES

1 Bedroom Apartment located in Leeds

**** FREE SEASONAL BACKGROUND GAS CENTRAL HEATING ****

Recently built 1 bedroom furnished apartment in central Hyde Park a 2 min walk from Sainsburys on Brudenel Road.

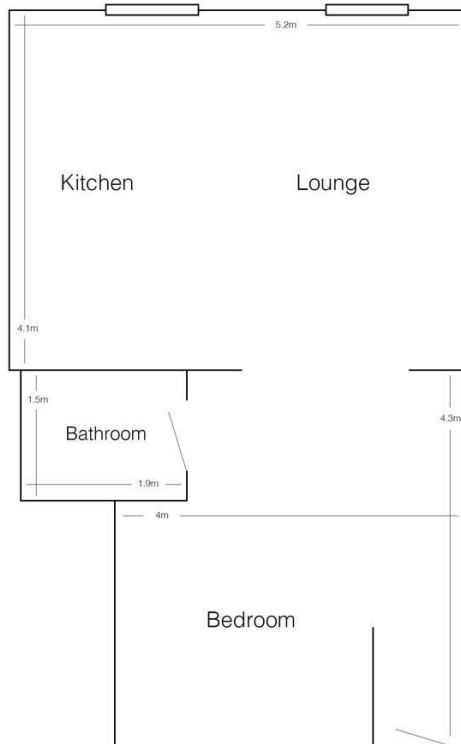
The lounge has a wood floor and is furnished with leather sofas and a wall mounted flat screen TV wired for Freeview (virgin cable is also pre installed).

The modern kitchen has a fridge freezer, washer dryer and fan oven with ceramic hob.

The carpeted bedroom is furnished with a double bed and Ikea wardrobe and desk.

The flat also has some off street parking and is alarmed.

The flat is fully gas central heated AND WATER RATES ARE INCLUDED at no extra charge.



Flat 7, 16 Ash Grove
(drawing not to scale)

Call us on

01132782201

phil@sjm-properties.com

sjm-properties.com

Council Tax Band

A

Energy Efficiency Rating		Current	Potential
<i>Very energy efficient - lower running costs</i>			
(92 plus) A			
(81-91) B			
(69-80) C			
(55-68) D			
(39-54) E			
(21-38) F			
(1-20) G			
<i>Not energy efficient - higher running costs</i>			
England & Wales		EU Directive 2002/91/EC	

Agents Note: Whilst every care has been taken to prepare these particulars, they are for guidance purposes only. All measurements are approximate and are for general guidance purposes only and whilst every care has been taken to ensure their accuracy, they should not be relied upon and potential buyers are advised to recheck the measurements.

SJM [©]
PROPERTIES