



Frobisher Gardens
Chafford Hundred, RM16 6EZ

£535,000



Full Description

- Detached Residence
- Four Reception Rooms
- Ground Floor WC
- Converted Garage
- Two En Suite Shower Rooms

Description

Thomas Marsh are delighted to offer this very well presented four bedroom detached family home located within walking distance of the popular Tudor Court primary school. Internally this property has an abundance of features, some of which include four reception rooms, spacious kitchen, ground floor wc, four good size bedrooms, two en suite shower rooms and a modern family bathroom. Externally the property also offers a gated driveway to front providing secure off street parking and a low maintenance garden featuring artificial grass and side access.

Entrance Hall

Ground Floor WC

6' 6" x 3' 4" (1.98m x 1.02m)

Lounge

15' 6" x 12' 0" (4.72m x 3.66m)

Dining Room

9' 3" x 9' 2" (2.82m x 2.79m)

Study

9' 7" x 5' 6" (2.92m x 1.68m)

Reception Room

21' 8" x 8' 1" (6.6m x 2.46m)

garage conversion

Kitchen

12' 0" x 9' 7" (3.66m x 2.92m)

Landing:

Master Bedroom

11' 6" x 9' 4" (3.51m x 2.84m)

with fitted wardrobe

En-Suite Shower Room

6' 5" x 5' 2" (1.96m x 1.57m)

Bedroom Two

9' 1" x 8' 6" (2.77m x 2.59m)

with fitted wardrobe

En-Suite Shower Room

5' 8" x 5' 1" (1.73m x 1.55m)

Bedroom Three

9' 7" x 7' 6" (2.92m x 2.29m)

with fitted wardrobe

Bedroom Four

8' 9" x 7' 0" (2.67m x 2.13m)



4



4



1



3

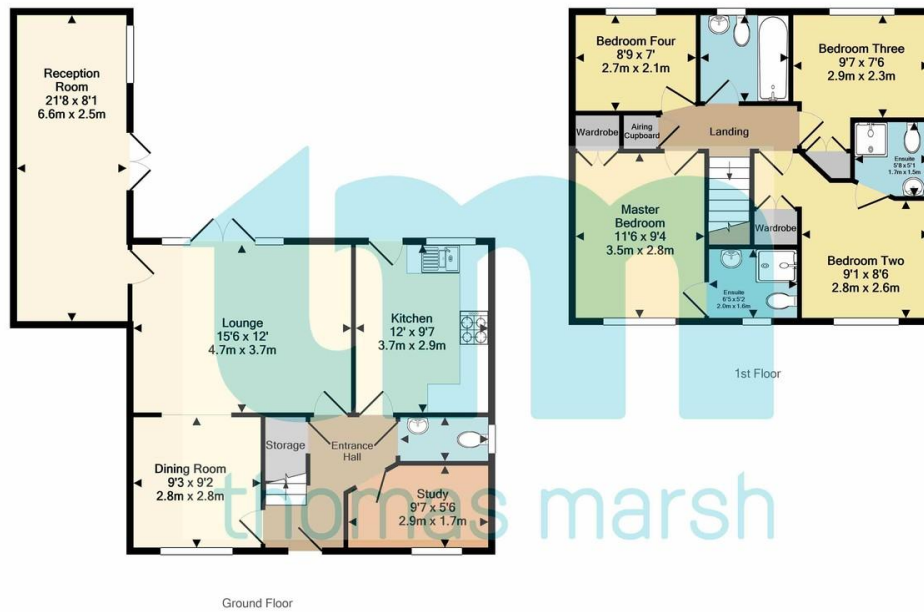


Garage, Off Road

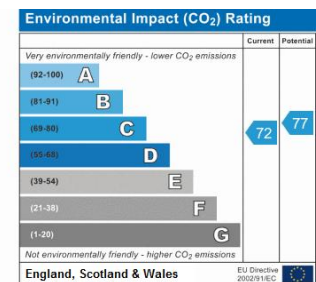
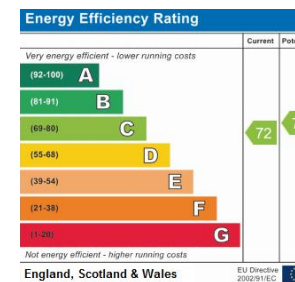




home
where our story begins



Whilst every attempt has been made to ensure the accuracy of the floor plan contained here, measurements of doors, windows, rooms and any other items are approximate and no responsibility is taken for any error, omission, or mis-statement. This plan is for illustrative purposes only and should be used as such by any prospective purchaser. The services, systems and appliances shown have not been tested and no guarantee as to their operability or efficiency can be given.
Made with Metropix i502020



thomas-marsh.co.uk
hello@thomas-marsh.com
T: 01375 370779

Agents Note: Whilst every care has been taken to prepare these sales particulars, they are for guidance purposes only. All measurements are approximate and for general guidance purposes only and whilst every care has been taken to ensure their accuracy, they should not be relied upon and potential buyers are advised to recheck the measurements.