

9 ROOKERY VIEW

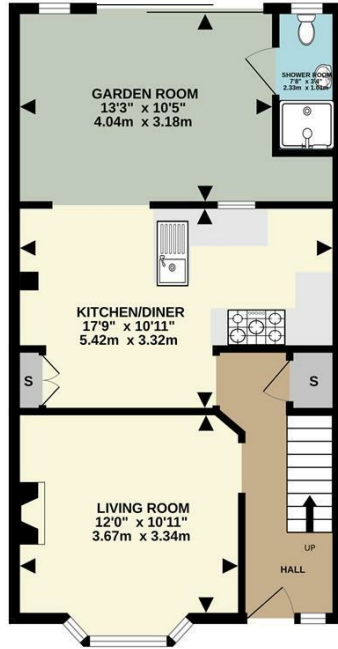
GRAYS, RM17 6AS

£425,000
FREEHOLD

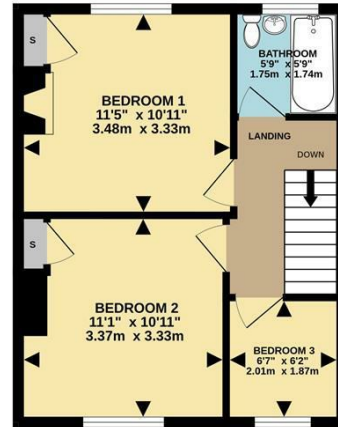
Thomas Marsh are delighted to offer to the market this extended three bedroom terrace property. Situated on a quiet residential turning, this property is an ideal family home and conveniently located within walking distance to transport links, schools and local amenities. Other benefits include off street parking for two cars and a 73' rear garden, and with an internal viewing coming highly recommended.

tm
thomas marsh

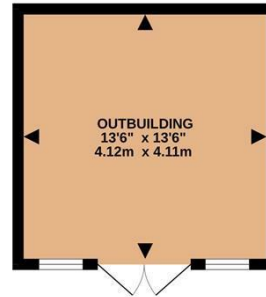
Ground Floor
955 sq.ft. (81.5 sq.m.) approx.



1st Floor
365 sq.ft. (33.9 sq.m.) approx.



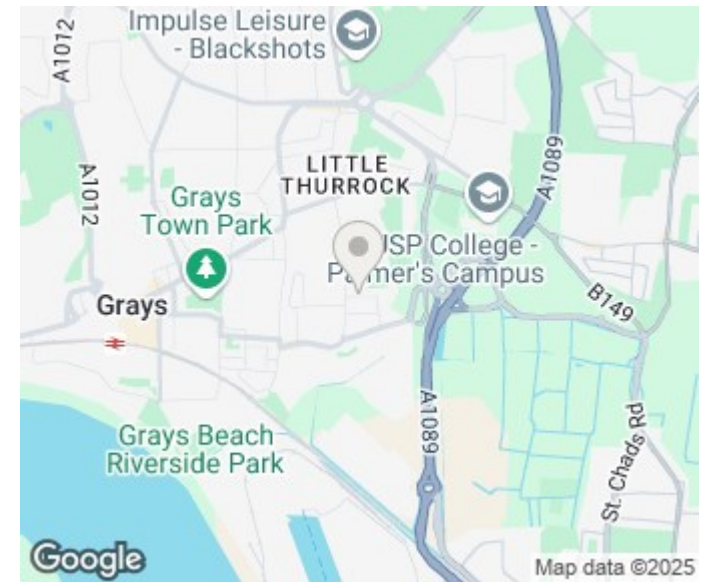
Outbuilding
182 sq.ft. (16.9 sq.m.) approx.



epcsinessex

TOTAL FLOOR AREA: 1102 sq.ft. (102.4 sq.m.) approx.

Whilst every attempt has been made to ensure the accuracy of the floorplan contained here, measurements of doors, windows, rooms and any other items are approximate and no responsibility is taken for any error, omission or mis-statement. This plan is for illustrative purposes only and should be used as such by any prospective purchaser. The services, systems and appliances shown have not been tested and no guarantee as to their operability or efficiency can be given.
Made with Metropix ©2025



Energy Efficiency Rating		
	Current	Potential
Very energy efficient - lower running costs		
(92 plus) A		88
(81-91) B		
(69-80) C		61
(55-68) D		
(39-54) E		
(21-38) F		
(1-20) G		
Not energy efficient - higher running costs		
England & Wales	EU Directive 2002/91/EC	

Agents Note: Whilst every care has been taken to prepare these particulars, they are for guidance purposes only. All measurements are approximate and are for general guidance purposes only and whilst every care has been taken to ensure their accuracy, they should not be relied upon and potential buyers/tenants are advised to recheck the measurements

Grays Sales
47 Orsett Road
Grays
Essex
RM17 5HJ

01375 370779
sales@thomas-marsh.com
www.thomas-marsh.com

