



13 SALIX ROAD

GRAYS, RM17 6UH

£330,000
FREEHOLD

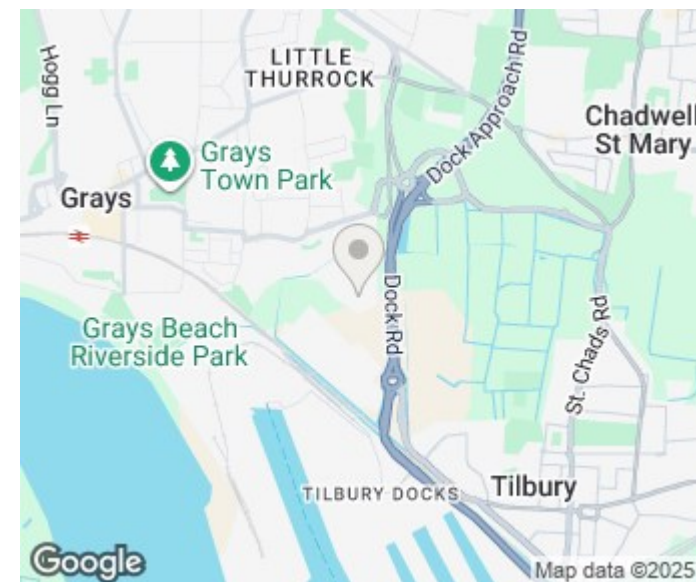
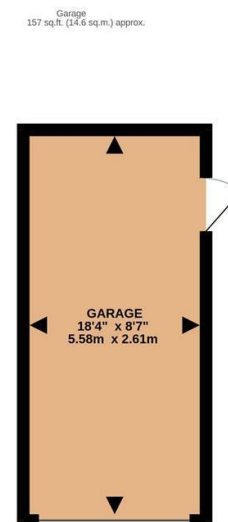
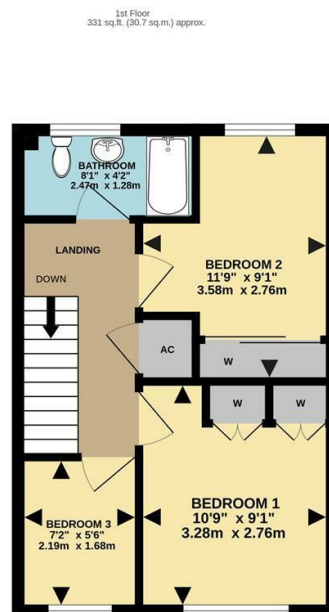
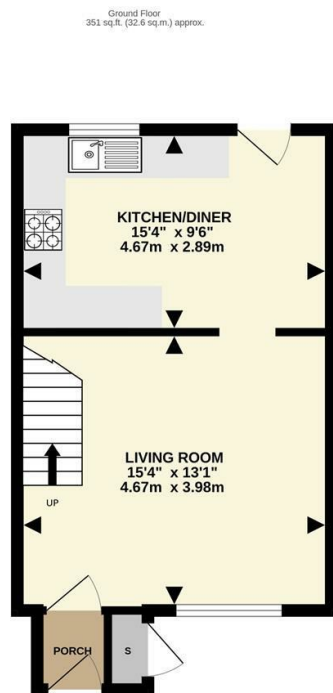
Thomas Marsh are pleased to present this charming three-bedroom semi-detached family home, perfect for first-time buyers looking to settle in a welcoming community. This property combines comfortable living spaces with practical amenities, making it an ideal choice for families.

Key Features:

Three Spacious Bedrooms: Enjoy ample space with three well-proportioned bedrooms, ideal for family living or accommodating guests.

Spacious Kitchen/Dining Area: The generous kitchen/dining area offers a perfect space for family meals and entertaining.





Energy Efficiency Rating		
	Current	Potential
Very energy efficient - lower running costs		
(92 plus) A		
(81-91) B		85
(69-80) C		
(55-68) D	64	
(39-54) E		
(21-38) F		
(1-20) G		
Not energy efficient - higher running costs		
England & Wales	EU Directive 2002/91/EC	

epcsinessex

TOTAL FLOOR AREA : 838 sq.ft. (77.9 sq.m.) approx.

Whilst every attempt has been made to ensure the accuracy of the floorplan contained here, measurements of doors, windows, rooms and any other items are approximate and no responsibility is taken for any error, omission or mis-statement. This plan is for illustrative purposes only and should be used as such by any prospective purchaser. The services, systems and appliances shown have not been tested and no guarantee as to their operability or efficiency can be given.

Made with Metropix ©2025

Agents Note: Whilst every care has been taken to prepare these particulars, they are for guidance purposes only. All measurements are approximate and are for general guidance purposes only and whilst every care has been taken to ensure their accuracy, they should not be relied upon and potential buyers/tenants are advised to recheck the measurements

Grays Sales
47 Orsett Road
Grays
Essex
RM17 5HJ

01375 370779
sales@thomas-marsh.com
www.thomas-marsh.com

