



FLAT 5 BRAMLEY CRESCENT

ILFORD, IG2 6JS

£220,000
LEASEHOLD

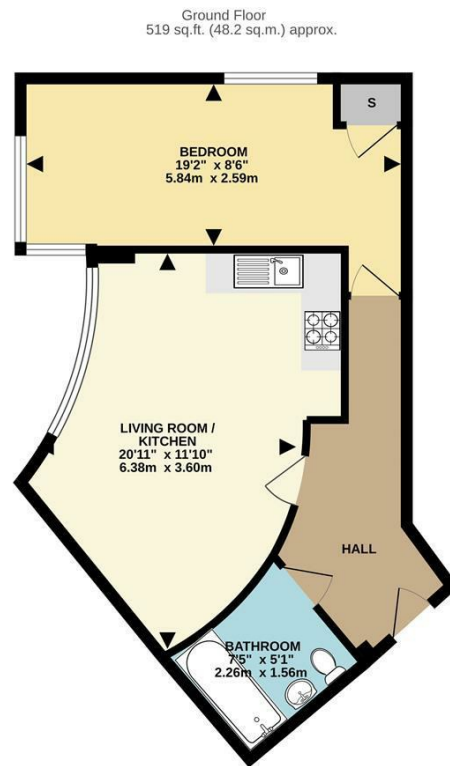
This well presented one-bedroom ground floor apartment is ideally located within walking distance of Gants Hill Underground station and a variety of local shops.

Accommodation Details:

Open Plan Lounge Kitchen: The spacious open-plan living space is perfect for both relaxation and entertaining, blending modern design with functionality.

Double Bedroom: The comfortable double bedroom provides a restful retreat.

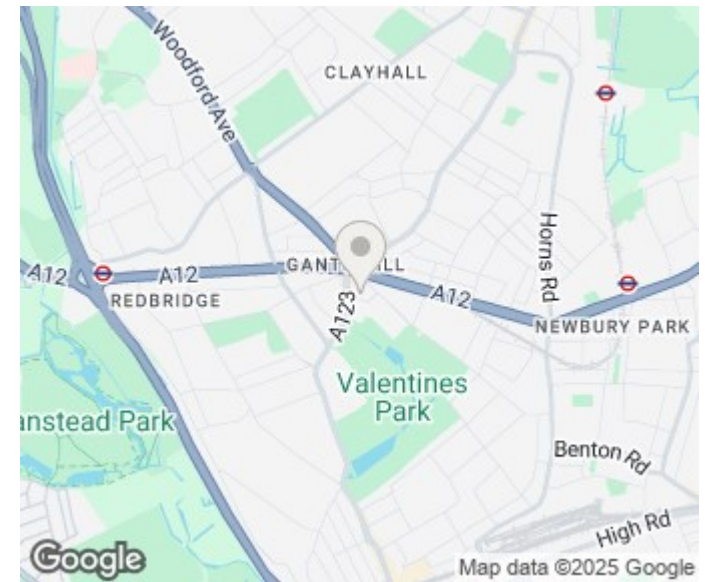
tm
thomas marsh



epcsinsex

TOTAL FLOOR AREA : 519 sq.ft. (48.2 sq.m.) approx.

Whilst every attempt has been made to ensure the accuracy of the floorplan contained here, measurements of doors, windows, rooms and any other items are approximate and no responsibility is taken for any error, omission or mis-statement. This plan is for illustrative purposes only and should be used as such by any prospective purchaser. The services, systems and appliances shown have not been tested and no guarantee as to their operability or efficiency can be given.
Made with floorplan C2025



Energy Efficiency Rating		
	Current	Potential
Very energy efficient - lower running costs		
(92 plus) A		
(81-91) B		
(69-80) C	77	78
(55-68) D		
(39-54) E		
(21-38) F		
(1-20) G		
Not energy efficient - higher running costs		
England & Wales	EU Directive 2002/91/EC	

Agents Note: Whilst every care has been taken to prepare these particulars, they are for guidance purposes only. All measurements are approximate and are for general guidance purposes only and whilst every care has been taken to ensure their accuracy, they should not be relied upon and potential buyers/tenants are advised to recheck the measurements

Grays Sales
47 Orsett Road
Grays
Essex
RM17 5HJ

01375 370779
sales@thomas-marsh.com
www.thomas-marsh.com

