



148 PALMERSTON ROAD

GRAYS, RM20 4YP

£375,000
FREEHOLD

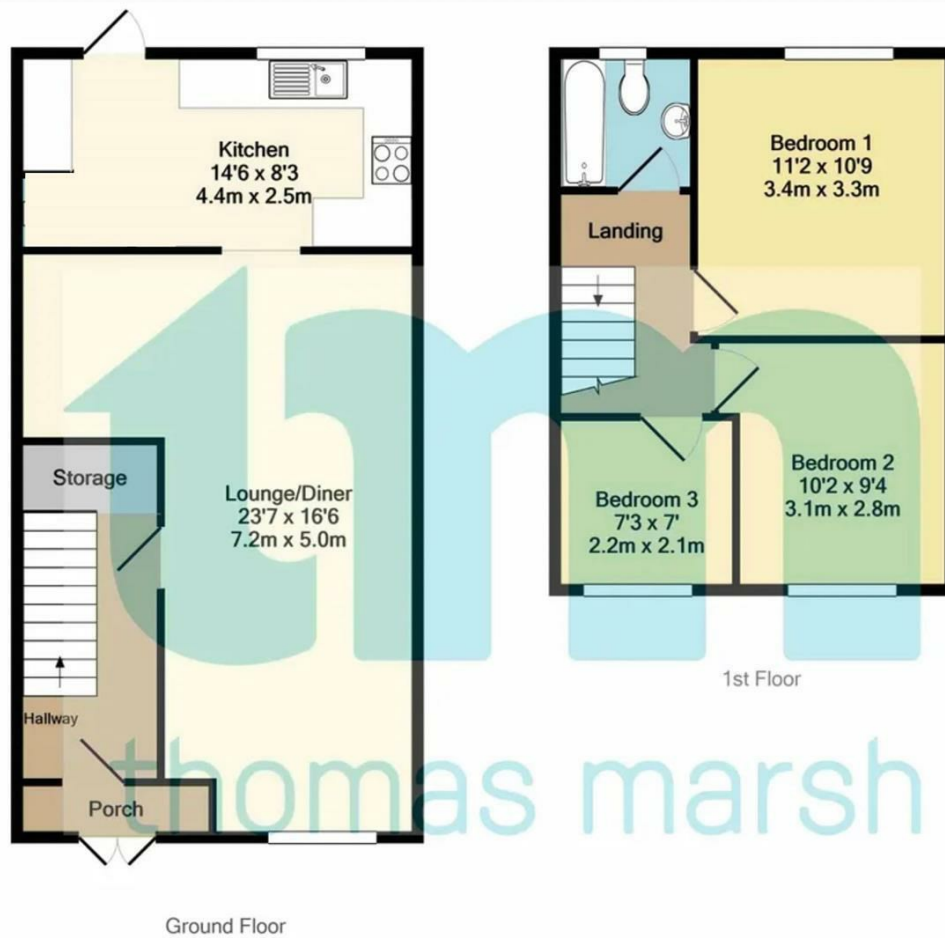
This is a charming three-bedroom terrace house that offers comfortable living in a well-connected area. Located in the town of Grays, Essex, this property provides easy access to local amenities, transport links, and schools, making it an ideal choice for families, first-time buyers, or investors.

Key Features: Bedrooms: 3 generously sized bedrooms, offering flexibility for family living or home office setups.

Living Areas: A cozy living room that provides a welcoming atmosphere, perfect for relaxation and entertainment.

Kitchen: A functional kitchen with space for cooking and meal prep, possibly with room for a dining area.

tm
thomas marsh



Energy Efficiency Rating		
	Current	Potential
Very energy efficient - lower running costs		
(92 plus) A		87
(81-91) B		
(69-80) C		
(55-68) D	67	
(39-54) E		
(21-38) F		
(1-20) G		
Not energy efficient - higher running costs		
England & Wales	EU Directive 2002/91/EC	

Agents Note: Whilst every care has been taken to prepare these particulars, they are for guidance purposes only. All measurements are approximate and are for general guidance purposes only and whilst every care has been taken to ensure their accuracy, they should not be relied upon and potential buyers/tenants are advised to recheck the measurements

Grays Lettings
47 Orsett Road
Grays
Essex
RM17 5HJ

01375 370779
lettings@thomas-marsh.com
www.thomas-marsh.com

