



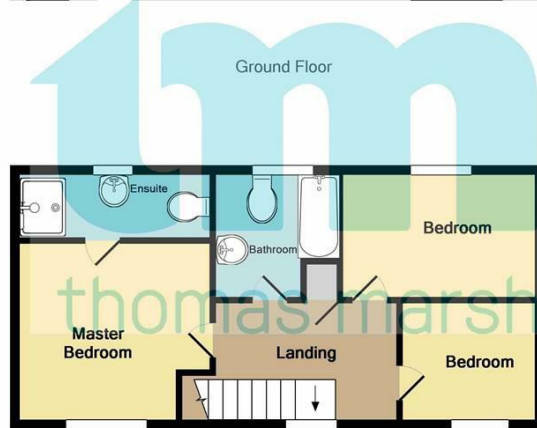
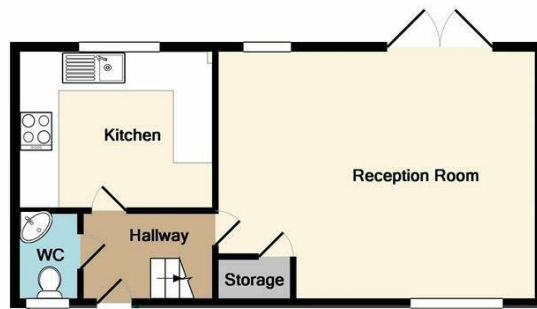
399 CASPIAN WAY

PURFLEET, RM19 1LD

£1,750 PCM

AVAILABLE NOW! A DECEIVINGLY SPACIOUS THREE BEDROOM family home positioned within a popular development in PURFLEET and located a short WALKING DISTANCE TO PURFLEET C2C STATION whilst offering easy access to M25 & A13. This property is AVAILABLE NOW and benefits from an UN-OVERLOOKED SOUTH FACING GARDEN, AMTICO FLOORING and EN-SUITE TO MASTER BEDROOM.

tm
thomas marsh



1st Floor

Whilst every attempt has been made to ensure the accuracy of the floor plan contained here, measurements of doors, windows, rooms and any other items are approximate and no responsibility is taken for any error, omission, or mis-statement. This plan is for illustrative purposes only and should be used as such by any prospective purchaser. The services, systems and appliances shown have not been tested and no guarantee as to their operability or efficiency can be given
Made with Metropix ©2017



Energy Efficiency Rating		
	Current	Potential
Very energy efficient - lower running costs		
(92 plus) A		
(81-91) B	82	83
(69-80) C		
(55-68) D		
(39-54) E		
(21-38) F		
(1-20) G		
Not energy efficient - higher running costs		
England & Wales	EU Directive 2002/91/EC	

Agents Note: Whilst every care has been taken to prepare these particulars, they are for guidance purposes only. All measurements are approximate and are for general guidance purposes only and whilst every care has been taken to ensure their accuracy, they should not be relied upon and potential buyers/tenants are advised to recheck the measurements

Grays Lettings
47 Orsett Road
Grays
Essex
RM17 5HJ

01375 370779
lettings@thomas-marsh.com
www.thomas-marsh.com

