



94A LEYTONSTONE ROAD

LONDON, E15 1TQ

£280,000
LEASEHOLD

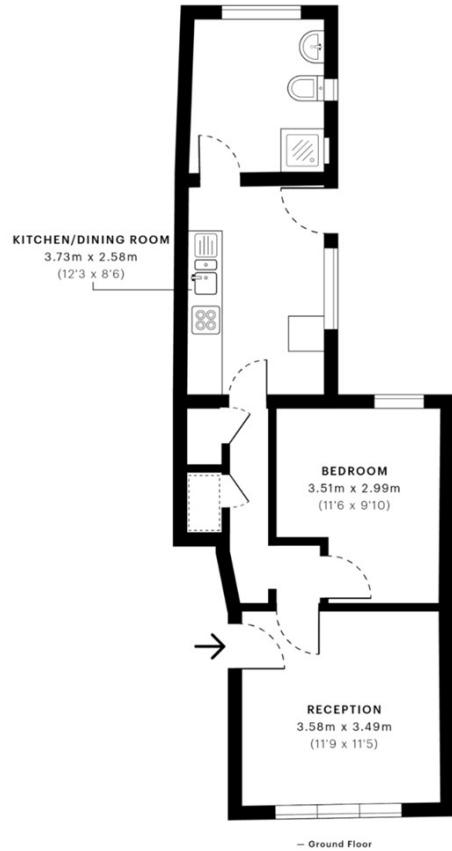
Thomas Marsh are delighted to offer this spacious, light, and well-kept 1 Bedroom ground floor conversion for sale.

This larger than average property comprises a spacious double bedroom and lounge, fully fitted kitchen and bathroom. The property also has direct access to communal garden.

Situated within close distance to Stratford International Station, Pudding Mill Lane DLR, the Queen Elizabeth Olympic Park and Westfield's Shopping Centre, this is a fantastic purchase for a commuter or buy to let investor.

Ground Rent £250 pa

tm
thomas marsh



Energy Efficiency Rating		
	Current	Potential
Very energy efficient - lower running costs		
(92 plus) A		
(81-91) B		
(69-80) C		
(55-68) D		
(39-54) E		
(21-38) F		
(1-20) G		
Not energy efficient - higher running costs		
England & Wales	EU Directive 2002/91/EC	

Agents Note: Whilst every care has been taken to prepare these particulars, they are for guidance purposes only. All measurements are approximate and are for general guidance purposes only and whilst every care has been taken to ensure their accuracy, they should not be relied upon and potential buyers/tenants are advised to recheck the measurements

Grays Sales
47 Orsett Road
Grays
Essex
RM17 5HJ

01375 370779
sales@thomas-marsh.com
www.thomas-marsh.com

