



2 Bed
Flat
located on Tawny
Grove, Coventry

£1,300 Per Calendar Month



 UP Estates



2



1



1



B

Property Address:
Tawny Grove,
Coventry,
CV4 8NL

PROPERTY SUMMARY

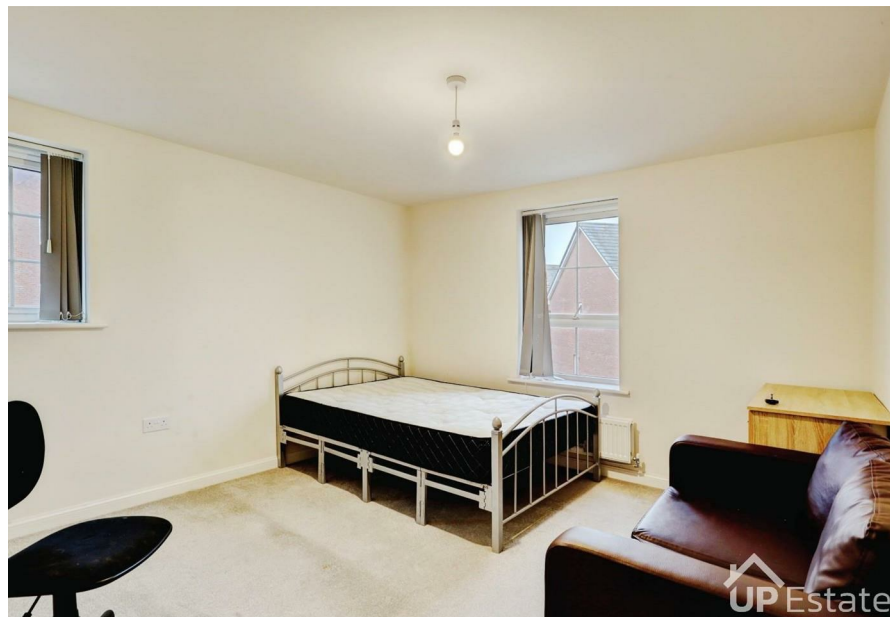
SPACIOUS TWO-BEDROOM APARTMENT | AVAILABLE IMMEDIATELY |
ALLOCATED PARKING | EXCELLENT TRANSPORT LINKS

This spacious and well-presented two-bedroom, part furnished available is available immediately and ideally located to offer excellent convenience for working professionals or couples. The property benefits from strong transport links to Warwick University, easy access to the A45, and is just a short distance from Cannon Park Shopping Centre and Costco, providing a wide range of shops, supermarkets, and amenities close by.

The accommodation is modern and generously proportioned throughout, comprising two large double bedrooms, a good-sized living room offering comfortable space to relax, and a spacious kitchen/diner with ample room for cooking and dining. The layout is practical and well suited to modern living.

Externally, the property benefits from allocated parking located directly outside the front door, offering excellent convenience.

A well-located, spacious rental property ready for immediate occupation.



CONTACT

Up Estates
6 Orchard Court
Binley Business Park
Coventry
Warwickshire
CV3 2TQ

E: lettings@upestates.co.uk
T: 024 7771 0780
www.upestates.co.uk