



3 Bed
House - Detached
located on Norman
Avenue, Nuneaton

£1,050 Per Month

UP Estates



UP Estates



UP Estate



UP Estates

UP Estates



3



1



1



D

Property Address:
Norman Avenue,
Nuneaton,
CV11 5NY

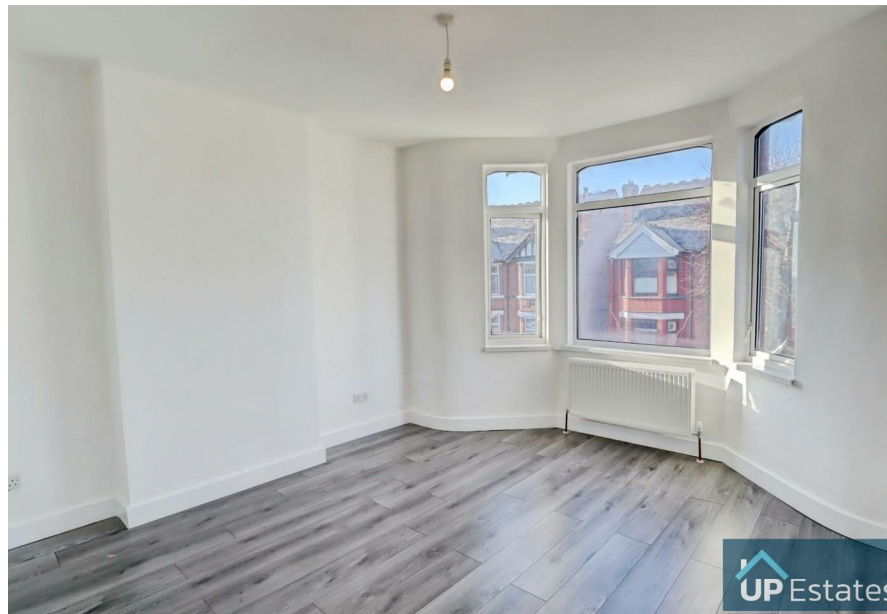
PROPERTY SUMMARY

****Discover this beautifully presented three-bedroom detached home situated on Norman Avenue in Nuneaton. Recently decorated throughout, the property offers modern, comfortable living ideal for families and working professionals alike.****

The ground floor boasts a spacious open-plan kitchen and dining area, perfect for everyday living and entertaining, complete with direct access to the rear garden. A bright and welcoming front living room provides additional relaxation space, and the home benefits from ample built-in storage, maximising convenience. Upstairs, you'll find three generous bedrooms along with a well-appointed family bathroom featuring both bath and shower facilities. Externally, the property includes a good-sized rear garden and the added bonus of an outbuilding, ideal for extra storage or hobby use. Positioned close to Nuneaton Town Centre, this home offers easy access to local shops, schools and amenities. Riversley Park is also within walking distance, providing a lovely green space for weekend strolls and outdoor leisure.

A fantastic opportunity to rent a well-located, well-presented home, call us now to arrange a viewing!

Available Now
£1100 pcm
Deposit: £1269



CONTACT

Up Estates
6 Orchard Court
Binley Business Park
Coventry
Warwickshire
CV3 2TQ

E: lettings@upestates.co.uk
T: 024 7771 0780
www.upestates.co.uk