



1 Bed  
Flat  
located  
on Walsgrave  
Road, Coventry  
£750 Per Month

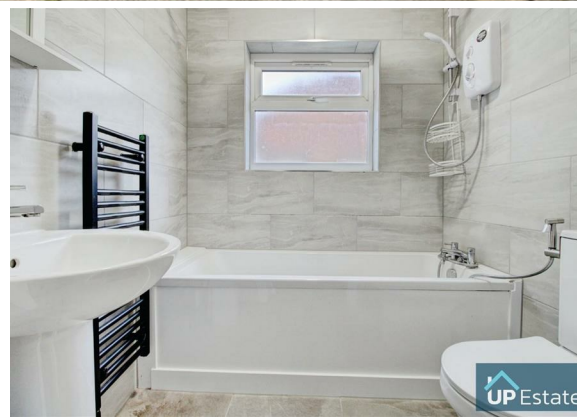
 UP Estates



 UP Estates



 UP Estates



 UP Estates

 UP Estates





1



1



1



Property Address:  
Walsgrave Road,  
Coventry,  
CV2 4HG

## PROPERTY SUMMARY

**\*\* AVAILABLE NOW - BEAUTIFULLY PRESENTED APARTMENT WITH AMENITIES ON YOUR DOORSTEP \*\*** This beautifully presented one-bedroom apartment offers a modern and stylish living space in a convenient location. Accessed via a secure gate off Clements Street, the property opens onto a private garden, perfect for relaxing or entertaining.

The apartment features a welcoming lean-to/lobby entrance hall that leads into a contemporary kitchen. The bathroom is sleek and modern, with high-quality fittings. Upstairs, you'll find a spacious bedroom and a living room, both designed with comfort and style in mind.

Perfectly suited for professionals or couples, this apartment combines modern living with a sense of privacy and charm. Priced at £750 per month, it is available to move into immediately. Don't miss the chance to make this stylish apartment your new home, with amenities and conveniences right on your doorstep.



## CONTACT

Up Estates  
6 Orchard Court  
Binley Business Park  
Coventry  
Warwickshire  
CV3 2TQ

E: [lettings@upestates.co.uk](mailto:lettings@upestates.co.uk)  
T: 024 7771 0780  
[www.upestates.co.uk](http://www.upestates.co.uk)