



2 Bedroom House - Terraced
located on Grangemouth Road,
Coventry
Offers Over £150,000

UP Estates



****NO FORWARD CHAIN - SPACIOUS LOUNGE DINER - TWE DOUBLE BEDROOMS - POPULAR LOCATION - DOUBLE GLAZED & CENTRAL HEATED**** This is a fantastic opportunity to purchase a good sized bay fronted family home on Grangemouth Road with no forward chain! The property very briefly comprises; front garden, porch, hall, lounge diner, kitchen & rear garden to the ground floor. On the first floor off of the landing are two double bedrooms and the family bathroom. The loft is boarded with light and ladder. Being within easy reach of the City Centre, schooling & a plethora of local amenities, such as Jubilee Crescent. Call now to view!

IMPORTANT NOTE TO PURCHASERS

Intending purchasers will be asked to produce identification documentation for Anti Money Laundering Regulations at a later stage and we would ask for your co-operation in order that there will be no delay in agreeing the sale.

We endeavour to make our sales particulars accurate and reliable, however, they do not constitute or form part of an offer or any contract and none is to be relied upon as statements of representation or fact. Any services, systems and appliances listed in this specification have not been tested by us and no guarantee as to their operating ability or efficiency is given.

All measurements have been taken as a guide to prospective buyers only and are not precise. Please be advised that some of the particulars may be awaiting vendor approval. If you require clarification or further information on any points, please contact us, especially if you are traveling some distance to view.

All fixtures and fittings ultimately are to be agreed with the seller via the fixtures and fittings form which will then form part of a legal contact through the conveyances and as the marketing estate agent none of our particulars or conversations are legally binding, only the legal solicitor paperwork.

Offers Over £150,000

- NO FORWARD CHAIN
- OPEN PLAN LARGE LOUNGE DINER
- GOOD SIZED GARDEN
- BOARDED LOFT WITH LIGHT & LADDER
- TWO DOUBLE BEDROOMS
- POPULAR LOCATION
- COUNCIL TAX BAND A
- CALL NOW TO VIEW!





Up Estates has not sought to verify the legal title of the property and the buyers must obtain verification from their solicitor.

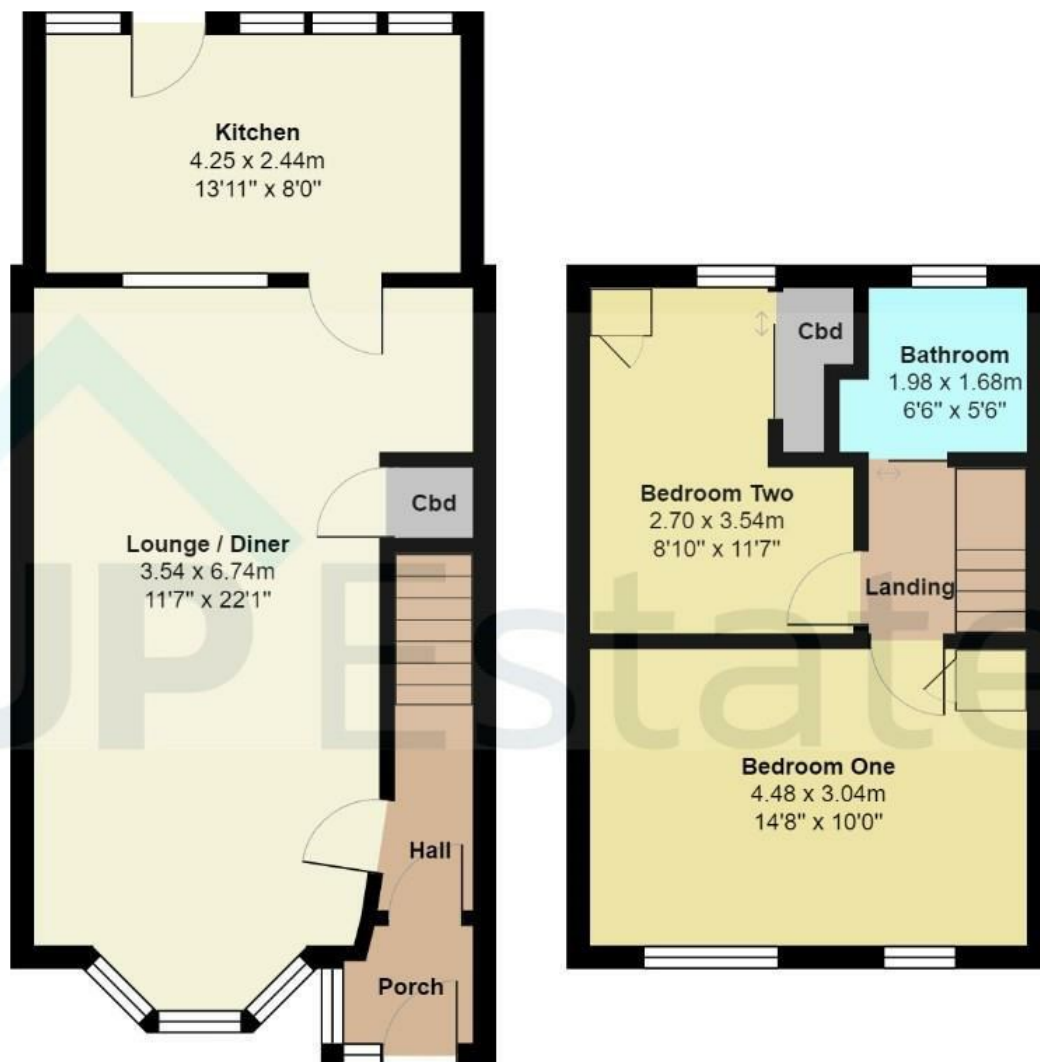






Grangemouth Road, Coventry





Total Area: 73.8 m² ... 795 ft²

All measurements are approximate and for display purposes only

CONTACT

Up Estates
 6 Orchard Court
 Binley Business Park
 Coventry
 Warwickshire
 CV3 2TQ

E: enquiries@upestates.co.uk
 T: 024 7771 0780

UP Estates