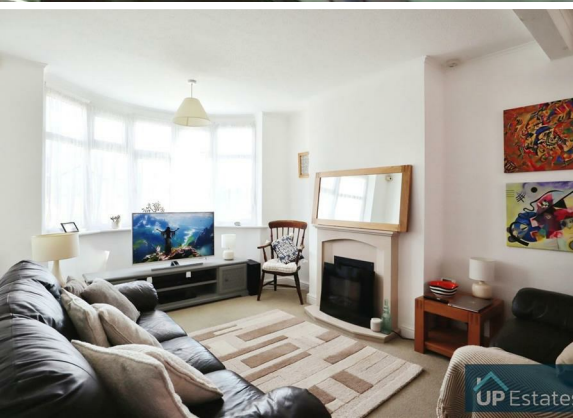




3 Bed
House - Terraced
located on Crossway
Road, Coventry

£1,250 Per Month





3



1



1



D

Property Address:
Crossway Road,
Coventry,
CV3 6JP

PROPERTY SUMMARY

AVAILABLE 1ST AUGUST Up Estates are excited to bring this spacious and excellently presented three bedroom property, situated in the sought after Finham area. Boasting excellent work and school links, this property is a must-see! In brief the property comprises: Spacious open plan living room, conservatory, and kitchen with gifted appliances; both of which lead into the well presented and maintained garden. Heading upstairs sits the bathroom, with bath-shower combination, two spacious double rooms with internal storage, and single bedroom. ***CALL NOW TO VIEW***



CONTACT

Up Estates
6 Orchard Court
Binley Business Park
Coventry
Warwickshire
CV3 2TQ

E: lettings@upestates.co.uk
T: 024 7771 0780
www.upestates.co.uk