



**3 Bedroom House - End Terrace**  
**located on School Street, Coventry**  
**£289,000**

**UP Estates**



**\*\*CHARACTERFUL YET MODERN, DECEPTIVELY SPACIOUS END OF TERRACE FAMILY HOME - TWO BATHROOMS - THREE DOUBLE BEDROOMS\*\*** This beautifully presented, characterful and deceptively spacious end terrace home is now available for purchase! We have been advised by the owner that this home is formerly an old mill house dating back to the 1900's. This property very briefly comprises; driveway, porch, dining room, living room flowing through to kitchen, followed by the downstairs shower room and lovely rear garden to the ground floor. On the first floor are two double bedrooms, and to the second floor is a further double bedroom boasting ensuite bathroom.

#### **FRONT ASPECT**

An attractive, end terrace family home with driveway, side access and door into porch.

#### **PORCH**

With double glazed windows and door into dining room.

#### **DINING ROOM**

11'5" x 13'2"

A lovely dining room with central heated radiator, double glazed bay window to the front aspect and door to lobby.

#### **LOBBY**

With stairs ascending to the first floor and door into living room.

#### **LIVING ROOM**

11'5" x 12'5"

A bright family living room with double glazed window, storage cupboard, central heated radiator and opening to kitchen.

#### **KITCHEN**

11'5" x 12'1"

Boasting a matching range of wall and base mounted units with work surfaces over, double glazed windows, door to the rear aspect and shower room, inset sink with drainer and mixer tap, integrated gas hob, extractor, oven, microwave, dishwasher, fridge freezer and washing machine.

£289,000

- CHARACTERFUL YET MODERN END OF TERRACE FAMILY HOME
- SOUGHT AFTER WOLSTON VILLAGE LOCATION
- TWO BATHROOMS (ONE ENSUITE)
- BEAUTIFUL REAR GARDEN
- THREE DOUBLE BEDROOMS
- WELL PRESENTED THROUGHOUT





#### **SHOWER ROOM**

6'0" x 6'7"

Being partially tiled with walk in shower cubicle, low level WC, hand wash basin mounted in vanity unit and opaque double glazed window.

#### **REAR ASPECT**

A fantastic garden initially paved followed by artificial lawn, with gated side access, storage shed and fenced boundary.

#### **LANDING**

With stairs and doors leading to accommodation.

#### **BEDROOM ONE**

11'9" x 22'0"

Found on the second floor, a double bedroom with central heated radiator, double glazed window, eaves storage and door to ensuite.

#### **ENSUITE BATHROOM**

6'10" x 7'1"

Boasting corner paneled bath,, double glazed skylight, low level WC and hand wash basin mounted in vanity unit.





**BEDROOM TWO**

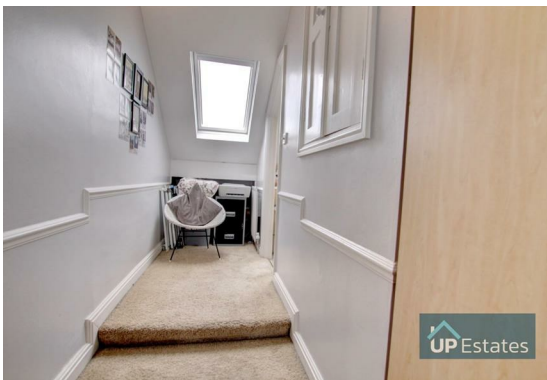
11'5" x 11'6"

A double bedroom with central heated radiator and double glazed window.

**BEDROOM THREE**

11'5" x 9'9"

A double bedroom with central heated radiator and double glazed window.





School Street, Wolston, Coventry





Total Area: 106.3 m<sup>2</sup> ... 1144 ft<sup>2</sup>

All measurements are approximate and for display purposes only

## CONTACT

Up Estates  
6 Orchard Court  
Binley Business Park  
Coventry  
Warwickshire  
CV3 2TQ

E: [enquiries@upestates.co.uk](mailto:enquiries@upestates.co.uk)  
T: 024 7771 0780

**UP** Estates