

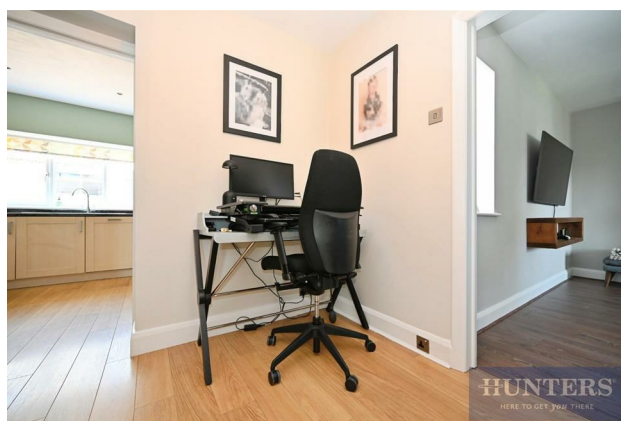
HUNTERS®

HERE TO GET *you* THERE

35 Silverdale Avenue, Guiseley, Leeds, LS20 8BD

Asking Price £435,000

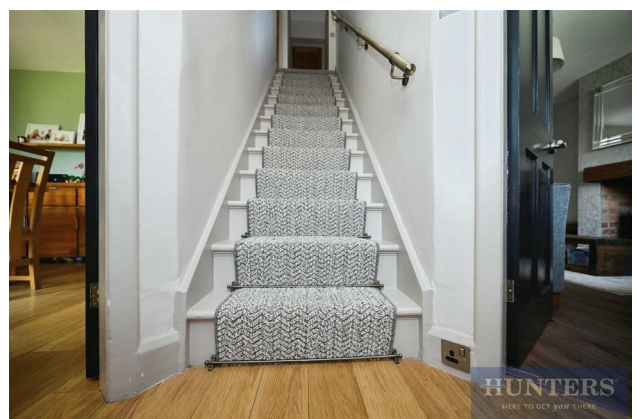
Property Images



HUNTERS[®]

HERE TO GET *you* THERE

Property Images



HUNTERS[®]

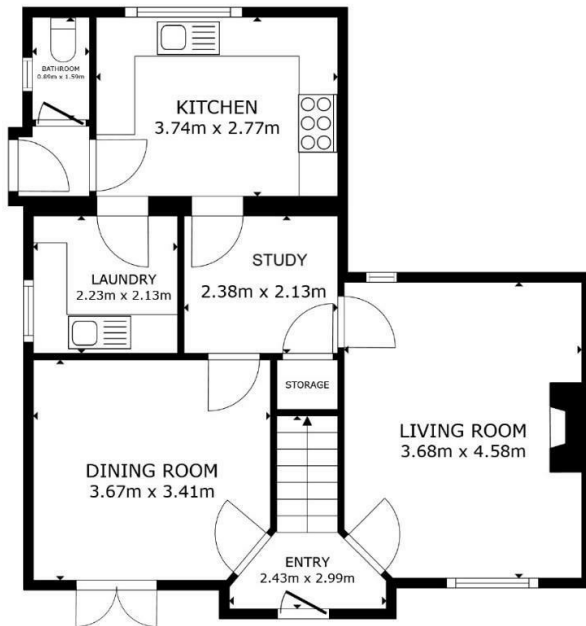
HERE TO GET *you* THERE

Property Images



HUNTERS®

HERE TO GET *you* THERE



FLOOR 1




FLOOR 2

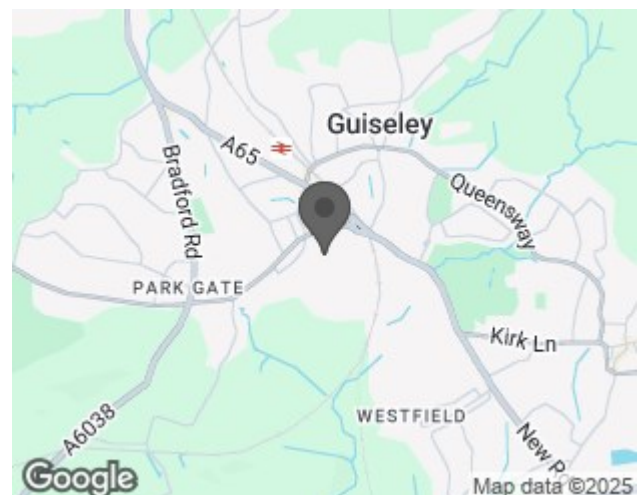
GROSS INTERNAL AREA
FLOOR 1 59.7 m² FLOOR 2 58.1 m²
TOTAL : 117.8 m²
SIZES AND DIMENSIONS ARE APPROXIMATE, ACTUAL MAY VARY.



EPC

Energy Efficiency Rating		Current	Potential
Very energy efficient - lower running costs		59	81
(92 plus) A			
(81-91) B			
(69-80) C			
(55-68) D			
(39-54) E			
(21-38) F			
(1-20) G			
Not energy efficient - higher running costs			
England & Wales		EU Directive 2002/91/EC	

Map



Details

Type: House - Semi-Detached Beds: 4 Bathrooms: 2 Receptions: 2 Tenure: Freehold

Summary

This beautifully presented four-bedroom family home in Guiseley offers spacious, light-filled living areas, ideal for modern family life. Conveniently located near excellent schools, transport links, and local amenities, it features landscaped gardens, a garage, and versatile interiors including a study, utility room, and stylish bathrooms across two floors.

Features

• GARDENS TO THREE SIDES • ATTRACTIVE SEMI WITH CHARACTER FEATURES • HIGH SPECIFICATION • CLOSE TO SHOPS, SCHOOLS AND AMENITIES • THE IDEAL FAMILY HOME • GARAGE AND OUTBUILDING • ENSUITE BEDROOM • TWO RECEPTION ROOMS • FULL OF NATURAL LIGHT