

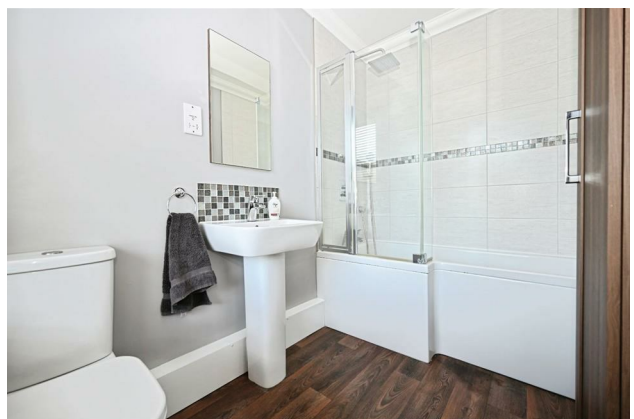
# HUNTERS<sup>®</sup>

HERE TO GET *you* THERE

**1 Springwell Cottages, Windmill Lane, Leeds, LS19 7YE**

**Asking Price £235,000**

**Property Images**





# HUNTERS®

HERE TO GET *you* THERE

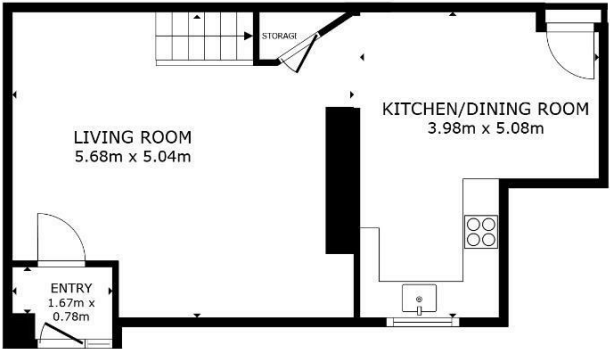
## Property Images



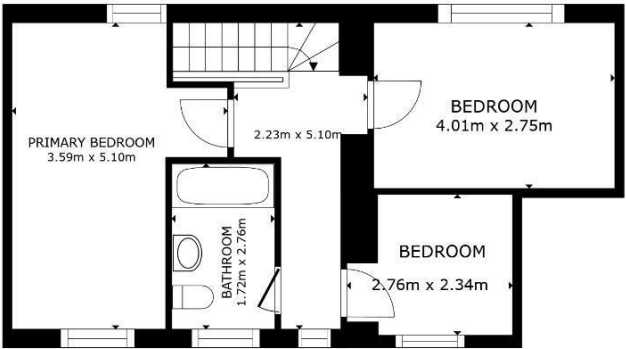
# HUNTERS<sup>®</sup>

HERE TO GET *you* THERE

Property Images



FLOOR 1

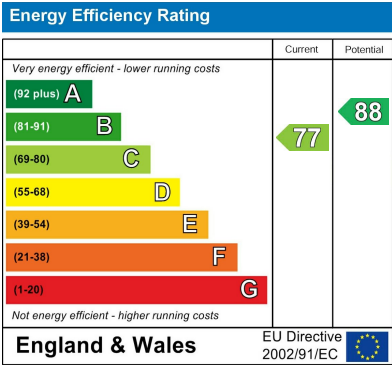


FLOOR 2

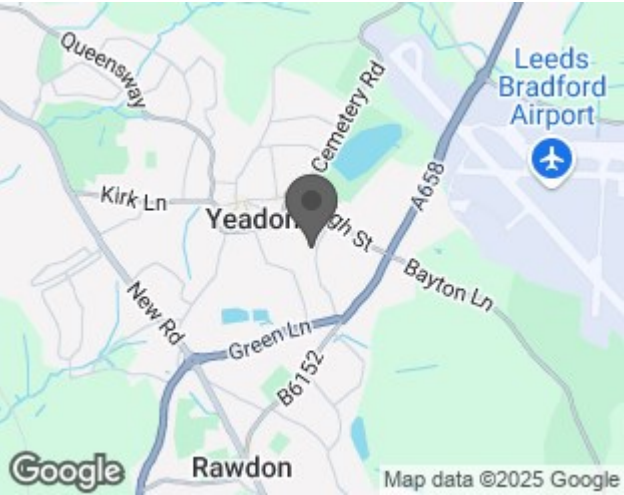
GROSS INTERNAL AREA  
FLOOR 1 46.0 m<sup>2</sup> FLOOR 2 47.4 m<sup>2</sup>  
TOTAL : 93.4 m<sup>2</sup>  
SIZES AND DIMENSIONS ARE APPROXIMATE, ACTUAL MAY VARY.



## EPC



## Map



## Details

Type: House - Semi-Detached Beds: 3 Bathrooms: 1 Receptions: 1 Tenure: Freehold

## Summary

Offered to the market with no onward chain, this charming stone-built semi-detached cottage is ideally situated just a short stroll from Yeadon High Street and local amenities, as well as the scenic Yeadon Tarn. Recently converted, the property combines the character of a traditional cottage with the comfort of modern living.

The ground floor accommodation comprises a welcoming dining kitchen, perfect for both everyday meals and entertaining, and a cosy lounge featuring an open staircase leading to the first floor. Upstairs, there are three well-proportioned bedrooms and a stylish house bathroom, making it an ideal home for a range of buyers including first-time buyers, downsizers, or small families.

The property benefits from double glazing and gas central heating throughout, ensuring warmth and energy efficiency. Outside, there is the added advantage of a dedicated parking space, a rare and valuable feature in this location.

With its convenient position close to shops, cafes, schools, and excellent transport links, this delightful home offers both comfort and practicality in a sought-after Yeadon setting.

## Features

- SPACIOUS THREE BEDROOM SEMI • OPEN PLAN LIVING SPACES • LOVELY VIEWS • PLEASANT SETTING • NO ONWARD CHAIN • ALLOCATED PARKING • CLOSE TO YEADON TARN, SHOPS AND SCHOOLS • HUNTERS 360 TOUR